

A black Lowrance Recon trolling motor is mounted on a boat's transom. The motor has a coiled black cable and a black control head with the Lowrance logo. In the foreground, a Lowrance electronic display is partially visible. The background shows a calm lake with a forested shoreline under a blue sky with white clouds.

LOWRANCE

www.lowrance.com

RECON™ TROLLING MOTORS

Customer Product Brief

FOR CUSTOMER USE ONLY. NO INFORMATION SHOULD
BE SHARED PUBLICALLY BEFORE JULY 16TH, 2024.



TABLE OF CONTENTS

STATE OF THE MARKET

INDUSTRY PAINPOINTS

OUR SOLUTION

FEATURES & BENEFITS

PRICING

TECHNICAL DETAILS

STATE OF THE MARKET



More and more customers and consumers are looking for a single brand, complete boating system, to reduce complexity, increase features, and improve support from plug-and-play integrations



**THE ULTIMATE FISHING™
SYSTEM**
with Complete Integration and Unbeatable Performance

Trolling Motor Trends



Overwhelming demand for more power, efficiency, sonar clarity, and advanced technology, combined with growing demand in complete one-brand integrated boat ecosystems.



Brushless technology has pushed premium trolling motors to new heights, enabling more power, efficiency, and improved sonar clarity.

POWERFUL



Capable competitors are entering the multi-species market combined with a growing desire from Lowrance® users in this market segment for complete system integration

INDUSTRY PAINPOINTS



Reliability

For many anglers' it's not a matter of if their trolling motor will have an issue, it's when.



Serviceability & Troubleshooting

Trolling Motors are difficult for an angler and service centers to troubleshoot and service. Delaying anglers' ability to get back on the water.



Ease of Use

From installation, stowing and deploying, and operating, trolling motors are getting increasingly complex making it discursive for many anglers to adapt to change

OUR SOLUTION

Introducing...

THE

RECON™

TROLLING MOTOR



Recon™ Product Overview



PRODUCT	RECON TROLLING MOTORS
What is it?	Freshwater & Saltwater Electric Steer 24V/36V Brushless, GPS Trolling Motors ranging from 48" up to 72"
Why it's needed	Lowrance® strategy is to deliver the best trolling motor line up in the industry, as premium customers increasingly prefer a single brand for complete boat system integration and less complexity
What are the most impactful features?	FreeSteer™ Joystick Remote Power, Efficiency GPS Anchor accuracy
Where does it stand vs. the competition?	Leading power, GPS Anchor accuracy, and control ease of use

RECON™

Control begins with Recon™ – the new generation of electric-steer 24V/36V Brushless, GPS trolling motors from Lowrance®, built for fresh and saltwater anglers.



Control your boat

- FreeSteer™ joystick remote - Industry-first 360° Thumb Control
- Wireless configurable foot pedal with detachable/programmable lower keypad
- Seamless NMEA® 2000® MFD integration inc. route planning



Control your position

- Hold your spot in any conditions with best-in-class power and GPS anchor (3ft/1m radius)
- Powerful and efficient brushless 24V/36V motor
- Weedless prop lets you go anywhere without barriers
- Industry first FreeSteer™ Jog feature



Control your catch

- Ease of use, design details let you focus on fishing
- Silent brushless motor doesn't spook fish
- Upgradeable nosecone gives easy access to Lowrance sonar for a clearer picture
- Reliability- Spend more time fishing than fixing – Have trust in your motor with lifetime shaft warranty and quick onboard diagnostics

Recon™ Sizes & SKU Variations

RECON™



RECON™ FRESHWATER
Sizes: 48", 54", 60", 72"



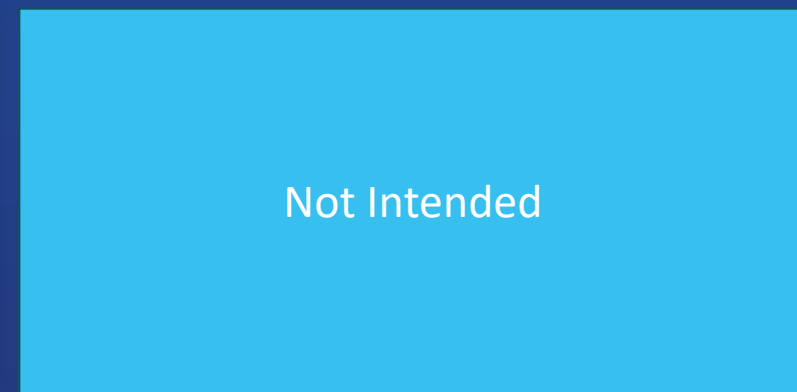
RECON™ SALTWATER
Lowrance® Sizes: 54", 60", 72"
Simrad® Sizes: 54", 60", 72"



DEEP-V BOAT



COASTAL BOATS



Not Intended

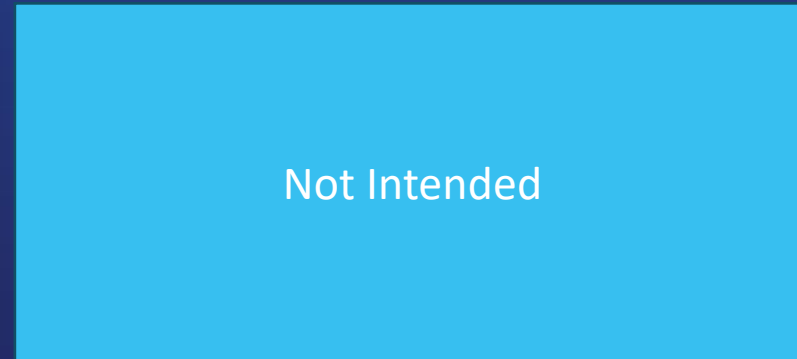
BASS BOAT



CENTER CONSOLES



TRAILER



Not Intended

SMALL BASS BOAT

BOAT TYPES

Mainly suited to mid & premium multi-species and saltwater fishing boats, some bass

Target Consumer Profiles



WEEKEND WARRIORS

Fishing obsessive, passionate about his sport.

'If I'm not actually fishing, I'm thinking about or talking about fishing. It's the only sport for me!'

Frequency: Fishes >20 times a year

Income/Spend: of <\$120,000 looking to spend no more than a \$10,000 on electronics

Boat Type: Kayak, bass boat, centre console, bay boat, Deep-V boats



PROFESSIONAL ANGLER

Competitive angler fishing most days of the year.

'It's all about the competition for me. Figuring out where the fish are, how they're feeding and making sure I land more weight than the next guy - that's what gets me going'

Frequency: Fishes >200 times a year

Income/Spend: of <\$300,000 looking to spend \$10,000+ on electronics

Boat Type: bass boat, centre console, Fiberglass Deep-V boat



GUIDE/CAPTAINS

Fishing as a way of life, either as a guide or restaurant owner.'

'It's a pretty good life when fishing is part of what helps me, sometimes literally, put food on the table. I need fishing for my livelihood, but I like fishing too'

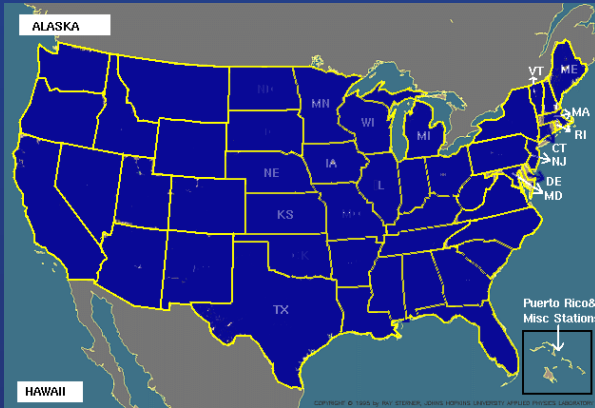
Frequency: Fishes >100 times a year

Income/Spend: of \$80,000 - \$300,000 looking to spend \$10,000+ on electronics

Boat Type: Centre console, Aluminium, Bay Boat, Fiberglass Deep-V boat

Target Consumer Profiles

IN AMER we will cover all areas (salt and fresh), but targeting Walleye, Muskie, freshwater multi-species as well as saltwater anglers...



For the ROW, core is coastal markets, in Europe it includes the Nordics, Spain, Italy and France. Whilst in APAC, the core will be Australia, NZ and Japan, but with some other opportunities in rest of Asia .



Our core consumer focus is on the Weekend Warriors up to the Pro Anglers and Captains/Guides, although there is expectation that some more affluent of Leisure Anglers may choose this product if bass enthusiast and looking for the best in the field.

In further segmentation this product will appeal all types of fishing; whether for fun, for food or for fame



Fish for Fun



Fish for Food





Fish for Fame

Portfolio Overview

Freshwater Multi-Species	EAGLE® EAGLE® EYE	ELITE FS®	RECON™ HDS® PRO
Saltwater Multi-Species	EAGLE® EAGLE® EYE	ELITE FS®	RECON™ HDS® PRO
Bass	EAGLE® EAGLE® EYE	ELITE FS®	GHOST® HDS® PRO
	Entry	Mid	Premium

Portfolio Boat Type Summary

Boat Type/User		GHOST®	RECON™
	Tournament Style Bass Fresh Inland/Rivers	✓	
	Mid-Tier Bass Boats	✓	
	Bay Boat Salt Near Coastal/Flats		✓
	Premium Deep-V Multi-species boats	✓	✓
	Mid-Tier Deep-V Multi-species boats		✓
	Value Deep-V Aluminum Fishing		

Lowrance® RECON™ MFD Compatibility

- NMEA 2000® T-connector included in the box
- Requires Lowrance® MFD software update (*available Q4 2024*)

MFD Model	Compatible via NMEA 2000®
HDS® Pro	✓
HDS® Live	✓
HDS® Carbon	✓
Elite FS™	✓

Simrad® Recon™ MFD Compatibility

- NMEA 2000® T-connector included in the box
- Requires Simrad® MFD software update (*available Q4 2024*)

MFD Model	Compatible via NMEA 2000®
NSSevo3S™ NSSevo3™	✓
NSOevo3S™ NSOevo3™	✓
NSX®	✓
NSX® ULTRA WIDE	✓

FEATURES & BENEFITS

Control begins with
RECON™ TROLLING MOTORS

The new generation of electric-steer trolling motors from Lowrance®, built for fresh and saltwater anglers.

CONTROL YOUR BOAT

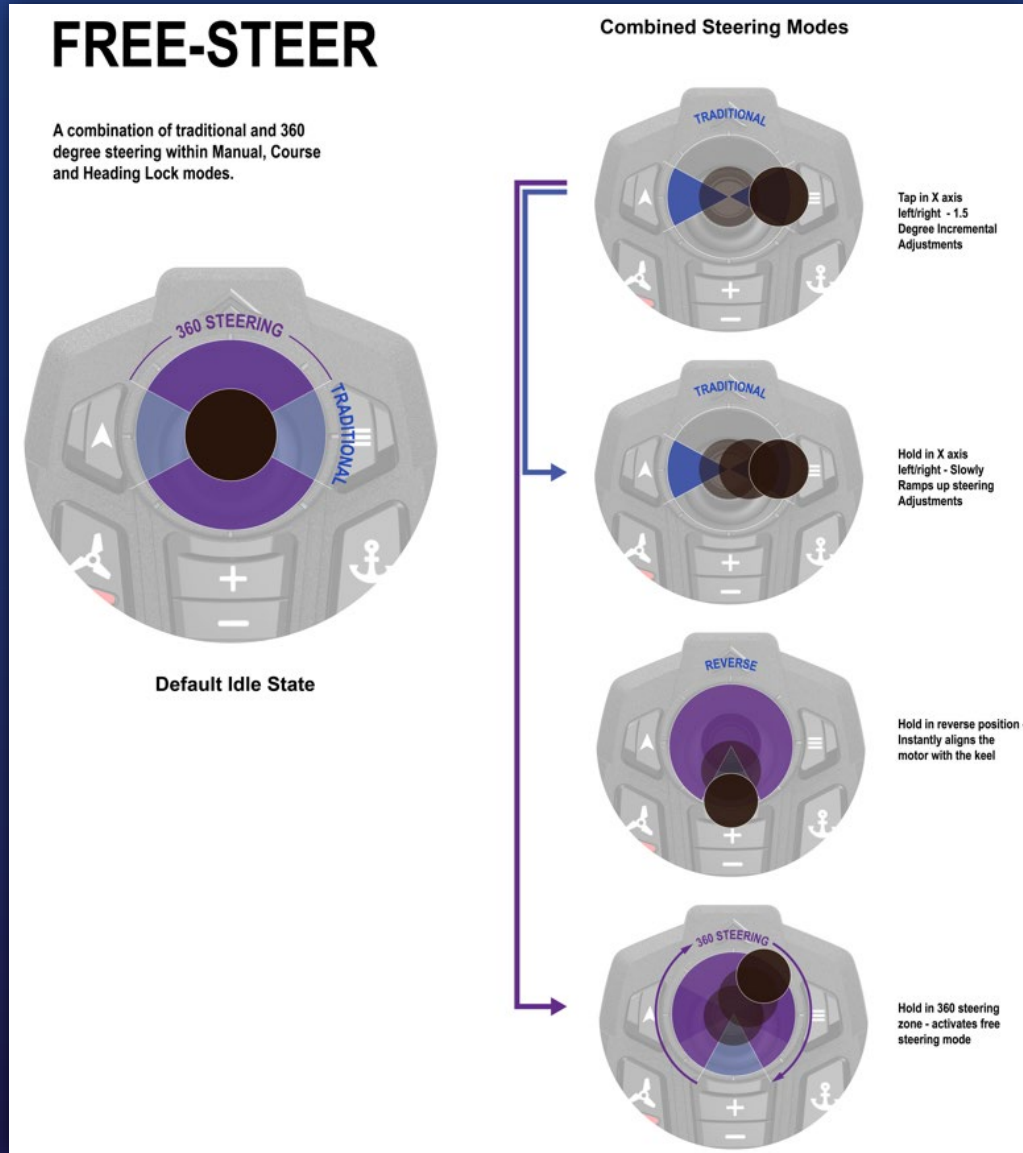
For the first time ever, Recon introduces FreeSteer™ – a lightweight, wearable joystick remote providing full 360 precision steering.

For full flexibility, Recon™ integrates with many of our Multi-functional displays via NMEA 2000®, and an instant-response wireless proportional pedal with programmable keys.

The outcome? Effortless boat control from anywhere onboard, that lets you focus on catching fish.



FreeSteer™ Joystick Operation



- Use it just like a traditional right/left button remote along the X-axis by tapping & releasing for smaller 1.5-degree adjustments or holding to the left or right for larger steering adjustments
- Quicker than multiple key presses and your thumb never has to leave the joystick
- Hold the joystick in any direction and the lower unit will align, then point in the corresponding direction until released.



CONTROL YOUR POSITION

Recon™ is built to put you on your target and keep you there. Best-in-class thrust gives you the confidence to get into position, while the highly accurate GPS anchor holds you on your target, no matter the conditions, dialling into an incredible 3ft/1m radius.

And your search knows no limits, as brushless technology combines with our weedless prop, offering complete control and efficiency in any environment

The FreeSteer™ remote revolutionizes positional control with its unique jogging abilities. FreeSteer™ unlocks the ability to move anchor positions freely, in any direction, without having to re-anchor the boat. Anglers also have the option to jog diagonally for a total of 8 directions.

FreeSteer™ Anchor Jog

FreeSteer™ unlocks the ability to move anchor positions freely, in any direction, without having to re-anchor the boat.

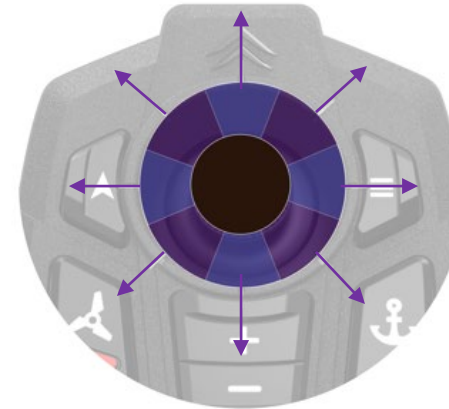
1. Point & hold the joystick in any direction
2. The trolling motor will gradually ramp up speed and begin navigating proportionally to the joystick position
3. Release the joystick to anchor at new location

Anglers also have the option to jog diagonally for a total of 8 directions.

- Traditional X & Y Axis press & release jog in ~5 ft./1.5m increments
- NEW! Diagonally press & release jog in ~5 ft./1.5m increments

ANCHOR

A combination of traditional and new steering methods

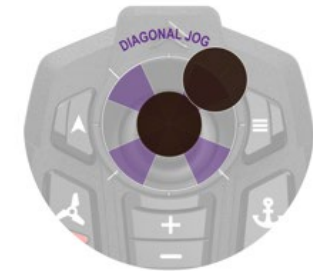


Anchor Idle State

Combined Steering Modes



Tap Left/Right/Up/Down - 5ft Incremental Adjustments



Tap in 45 deg angle - 5ft Diagonal Incremental Adjustments



Hold in any direction - 360 degree steering - Prop will gradually ramp up at a controlled speed. Thrust is proportional to joystick position, Release to anchor



Partially Engaged Joystick - Thrust is reduced for more precise anchor control, Release to anchor

CONTROL YOUR CATCH

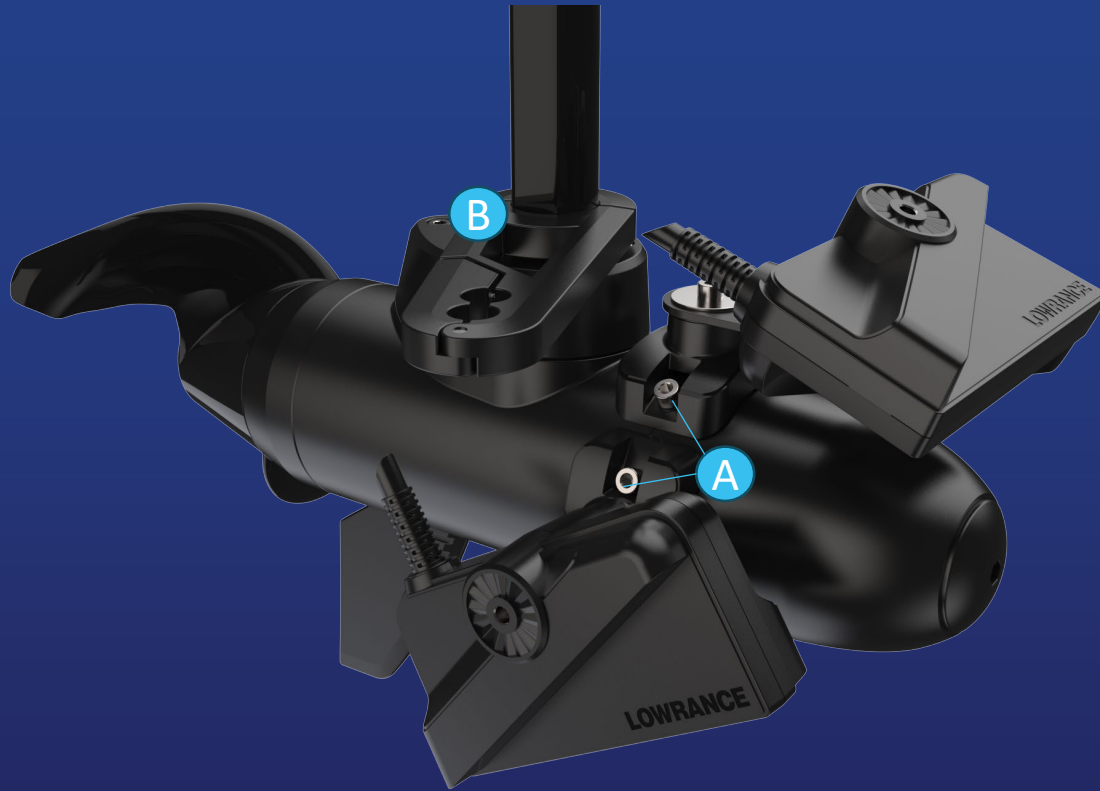
Recon™ has a silent brushless motor doesn't spook fish, no matter how close you get. And the upgradeable nosecone gives easy access to renowned Lowrance® sonar for the clearest, high-resolution images.

As anglers, we know the details that matter. Whether it's the multiple accessory mounting points, one-hand cam lock depth collar to enable on-the-go adjustments, or the LED indicators and back-lit controls that guarantee great visibility, even as the light fades. That's the difference that comes when you choose Lowrance. That, and the confidence of a lifetime shaft warranty.



**Product shown with optional Active Imaging™ 3-in-1 Nosecone installed. Freshwater-only option*

Recon™ ActiveTarget® Transducer Mounting



- A Utilize 4 of the 6 ActiveTarget® lower unit mounting attachment points (A) between the nosecone and the lower unit housing using 2 M5 x 12mm screws
- B Route cables alongside the trolling motor shaft using guide arms (B) that affix to the shaft above the lower unit and another above the transmission

PRICING

Recon™ Pricing

Part Number	Description	AMER (USD)	EMEA (EURO excl. VAT)	AUS (AUD excl. GST)	ROW (USD)	ROA (USD)
RECON™ Freshwater						
000-16172-001	RECON™-FW 48_GPS_HDI FOOT PEDAL	3,299.99	3,685.71	4,908.18	\$4,619.99	3,299.99
000-16173-001	RECON™-FW 54_GPS_HDI FOOT PEDAL	3,349.99	3,777.88	4,999.09	\$4,689.99	3,349.99
000-16174-001	RECON™-FW 60_GPS_HDI FOOT PEDAL	3,399.99	3,870.05	5,090.00	\$4,759.99	3,399.99
000-16175-001	RECON™-FW 72_GPS_HDI FOOT PEDAL	3,599.99	4,146.54	5,362.73	\$5,039.99	3,599.99
RECON™ Saltwater						
000-16179-001	RECON™-SW 54_GPS	3,499.99	4,054.38	5,271.82	\$4,899.99	3,499.99
000-16180-001	RECON™-SW 60_GPS	3,599.99	4,146.54	5,453.64	\$5,039.99	3,599.99
000-16181-001	RECON™-SW 72_GPS	3,799.99	4,238.71	5,635.45	\$5,319.99	3,799.99

**MOQ of 6 pieces. Orders must be in quantities of 6. Can be mixed between sizes.

Trolling Motor Accessory Pricing

NEW	PART NUMBER	DESCRIPTION	RRP \$	GHOST	RECON
NEW	000-16417-001	70A TROLLING MOTOR PLUG	34.99	✓	✓
NEW	000-16418-001	70A TROLLING MOTOR RECEPTACLE	40.99	✓	✓
NEW	000-16419-001	BREAKER KIT - 60AMP	58.99	✓	✓
NEW	000-16420-001	HEAVY DUTY QR BRACKET,COMPOSITE, WHITE	149.99		✓
NEW	000-16421-001	HEAVY DUTY QR BRACKET,COMPOSITE, BLACK	149.99		✓
NEW	000-16422-001	HEAVY DUTY QR BRACKET, ALUMINUM	249.99		✓
NEW	000-16398-001	RECON™ MOUNTING HARDWARE KIT	17.99	✓	✓
NEW	000-16176-001	FREESTEER™ JOYSTICK REMOTE – LOWRANCE®	299.99		✓
NEW	000-16160-001	FREESTEER™ JOYSTICK REMOTE – SIMRAD®	299.99		✓
NEW	000-16287-001	COMPACT GPS REMOTE	124.99	✓	✓
NEW	000-16409-001	REMOTE LANYARD	14.99	✓	✓
NEW	000-16177-001	ADVANCED WIRELESS FOOT PEDAL	349.99		✓
NEW	000-16353-001	RECON™ ACTIVE IMAGING™ 3-IN-1 NOSECONE	339.99		✓
NEW	000-16178-001	RECON™ 2-BLADE WEEDLESS PROPELLER	59.99		✓

PRODUCT DETAILS

Recon™ Customer Requirements Overview

1	Durability/Reliability	<ul style="list-style-type: none"> • Indestructible Carbon-fiber infused composite shaft with lifetime warranty • All-in-one cable with strain relief design and UV resistant coating for harsh environments • Proprietary saltwater corrosion resistant coating process (<i>Saltwater only</i>) • Riveted stow/deploy linkage system • Error Codes & Diagnostics available on remote, MFD, mobile App • User-serviceable design allows user to service & repair most components at home
2	Quiet	<ul style="list-style-type: none"> • Quiet lower unit • Quiet transmission steering
3	GPS Accuracy	<ul style="list-style-type: none"> • Industries most accurate GPS Anchor holds within 3 ft. radius • Boat scale feature via MFD & App for GPS precision • Internal compass
4	Precise, Responsive Steering	<ul style="list-style-type: none"> • Best-in-class steering speed @ 50 RPM for 2.5x steering speeds compared to the competition • Industry-first FreeSteer™ Joystick Remote • Lower unit direction indication on remote and multi-function display • Best-in-class advanced wireless proportional foot pedal with 40-degrees of heel-toe travel • 1-degree steering adjustments
5	MFD Connectivity	<ul style="list-style-type: none"> • Direct to a NMEA 2000® network • Plug-and-play upgradable SideScan sonar nosecone enabling 360 scanning (FW only) • Configurable remote and pedal keys that connect to multiple system devices
6	Ease of Use	<ul style="list-style-type: none"> • Riveted latch system for smooth stow/deploy • Cam-lock depth collar design allows for quick and easy on-the-go shaft adjustment • Program lower unit stow direction to auto-align when stow/deploy lever is engaged • Software updates, customize settings, diagnostics/error alerts & descriptions • 5 integrated accessory attachment points between the tower and the lower unit for ActiveTarget® and other accessory mounting options • Patented upgradable nosecones

Ghost® vs. Recon™ Features

Feature		GHOST®	RECON™
2-way communication between devices	Lower unit direction indication on screen		✓
	Error code & Diagnostics display on screen		✓
Control Method	FreeSteer™ Joystick Remote		✓
	Compact GPS Remote	✓	✓
	TMR-1 Remote	✓	
	Advanced Wireless Pedal		✓
All internal GPS/Heading Sensors			✓
User-serviceable service kits			✓
Accessory mounting points			✓

LET'S RECAP SECTION

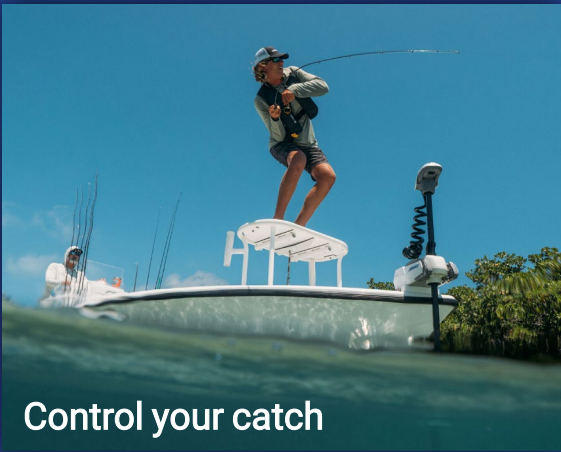
RECON™ | Recap Overview



Control your boat



Control your position



Control your catch



Fresh & Saltwater Mid & Premium Angler focus backed by the Ultimate Fishing System

7 Lowrance®, 3 Simrad® SKUs available
Fresh & Saltwater
48" - 72"



60" Freshwater
\$3,399.99

MSRP



60" Saltwater
\$3,599.99

MSRP

INTERNAL
REVEAL

June 3



DEALER
REVEAL

June 19



PRODUCT
ORDERS

June 19



LAUNCH
ASSESTS

July 16



PUBLIC
LAUNCH

ICAST
July 16th



CONTINUED
LAUNCH

METS
November



Product
SHIPPING

November



TECHNICAL DETAILS

Recon™ Overview

All-in-one cabling (8 AWG)

Mode selectable Visual LED indicator
**Patent Pending*

Status LEDs

Stow-assist grooves

Easy stow & Deploy

Up to 50 RPM
steering speed

Cam-lock depth collar
**Patent Pending*

NMEA 2000® direct connection (NMEA® T included)
Mini 9-pin sonar connector (adapter cable in box)

Carbon fiber infused indestructible shaft

Accessory mounting points

- Top of tower
- Hose clamp through tower

RECON™ 2-blade
weedless prop

Serviceable lower unit to shaft interface

3 ActiveTarget® screw mounting locations

- Scout = 1
- Forward/Down – 2 (1 each side)

Patented replaceable sonar nosecones

- HDI® standard (FW)
- AI 3-in-1 (FW)

Recon™ Overview



Power Button

- Turns Trolling motor On/Off
- Also used in Pairing devices

Status LED

- Indicates trolling motor battery level
- Green/Yellow/Red

Mode LED

- Indicates if a GPS Mode is active
- Green = ready, Flashing Blue, Red (no connection)



Stow-assist finger grooves

Motor aligns to set lower unit stow direction when stow lever is depressed



Head LED

- Default – On when the prop is engaged
- Mode 2 – always on
- Mode 3 – always off
- Patent Pending mode selectable



Cam-lock depth collar

- Reversible handle
- Serviceable without removal of other components
- Patent Pending

FreeSteer™ Joystick Remote

Bluetooth

FreeSteer™ Joystick steering

- Smooth & responsive in traditional x-axis steering and combined 360 joystick steering
- FreeSteer™ Enables 8-way directional anchor jog & Industry first 360 FreeSteer™ Jog

2" LCD transfective display

- High visibility in sunlight
- Limits the amount of backlight needed to save battery life

In-mode soft key

- Changes functionality based on current mode and locks the remote

Durable lanyard attachment point

FLOATS

Programmable keys

- Up to 4 programmable functions
- Short & long press

LED backlit keys

- Prop on/off
- Speed up/down
- Anchor

Ergonomic design

Tool-less battery door

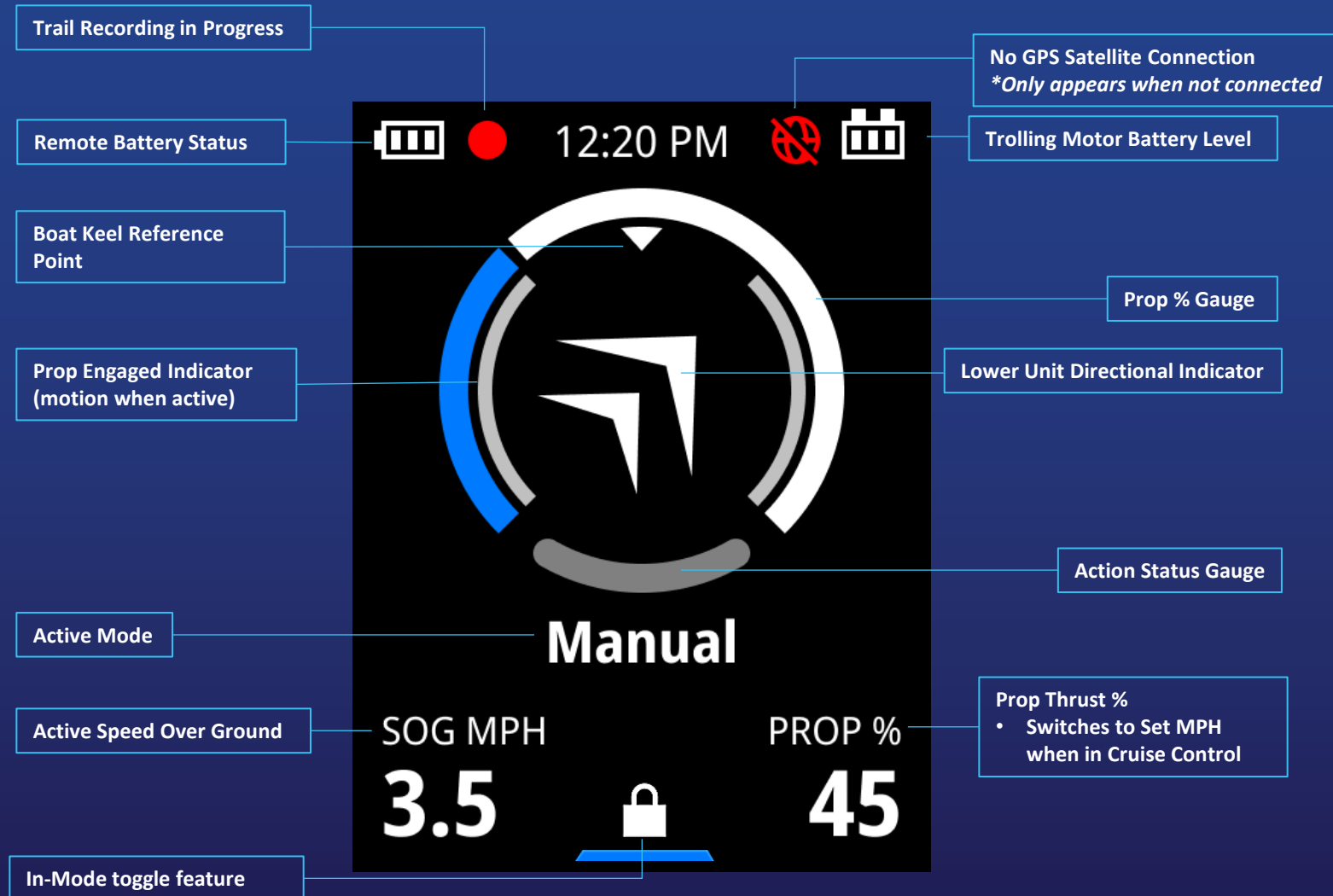
- AA batteries (2) included in box



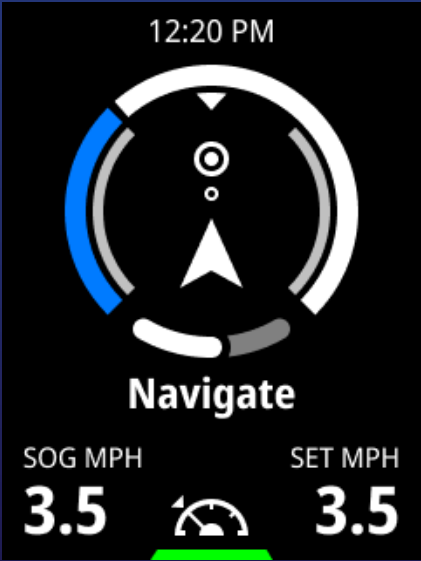
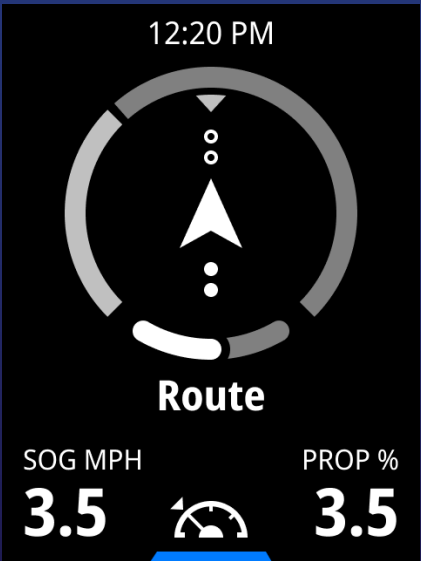
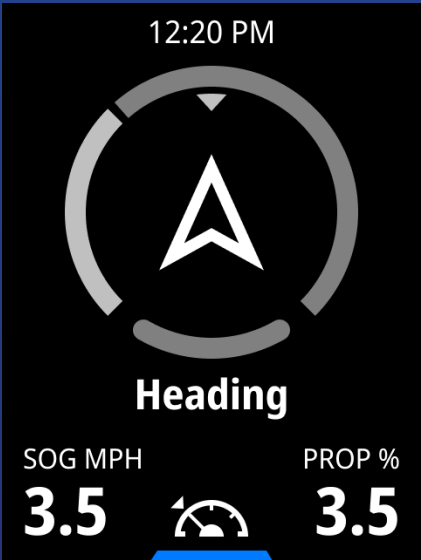
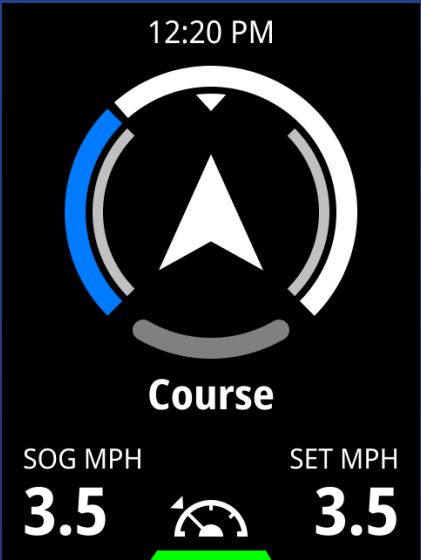
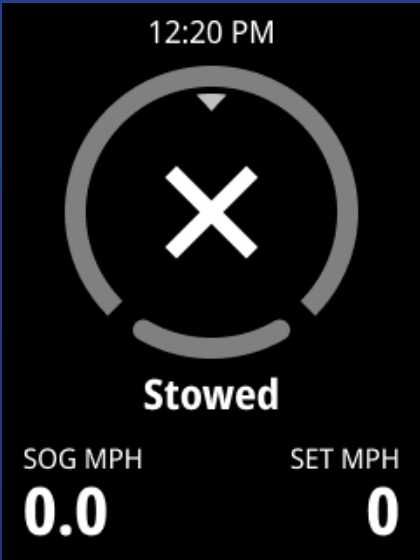
FreeSteer™ Joystick Remote Key Overview



FreeSteer™ Joystick Remote Screen Overview



FreeSteer™ Joystick Remote Screen Overview



FreeSteer™ Joystick Remote Settings



Menu		
< Back		
Waypoints	>	
Routes	>	
Battery	>	
Diagnostics	>	
Settings	>	

Settings		
< Back		
Remote	>	
Trolling motor	>	
Foot pedal	>	
Battery	>	

Remote		
< Back		
Display	>	
Buttons	>	
Joystick	>	
Language	EN	
Units	>	
Time	>	
About	>	
Bluetooth		
Lock remote		

Trolling motor		
< Back		
Boat scale	+4	
Arrival mode	Anchor	
Autopilot	>	
Motor LED	>	
Stow direction	Port	
Voltage	24v	
Audible Tones	Medium	
Bow offset	>	
Compass calibr...	>	
About	>	

Foot pedal 1		
< Back		
About	>	
Restore default		
Paired	✓	
Upper		
Button 1	None	
Button 2	None	
Button 3	None	
Lower		
Button 1	On	
Button 2	Heading	
Button 3	Course	

Advanced Wireless Pedal Overview

Bluetooth®

FlipSwitch™

- Allows user to customize which side they prefer momentary prop control

LED status light

- Indicates Status, Pairing, & Battery level

Deck mounting screw holes (3)

- Size #10 Screws

Proportional heel-toe steering with 40-degrees of total travel

AA batteries (3)

Variable speed wheel

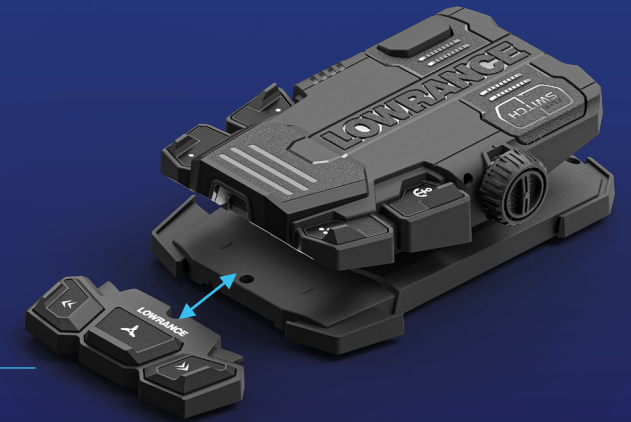
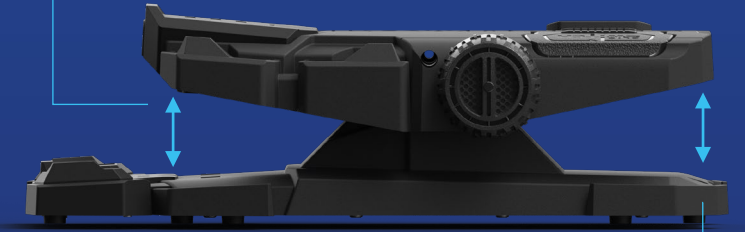
Direct 12v power connection
(Included in box)

3 Programmable keys

*Logo decal sheet included in box

Removable, Programmable lower key module
(Included in box)

*Fits standard foot pedal well w/out lower key module



Advanced Wireless Pedal Batteries - Video





Compact GPS Remote



**Compatible with Ghost® w/software update in Q4 '24*

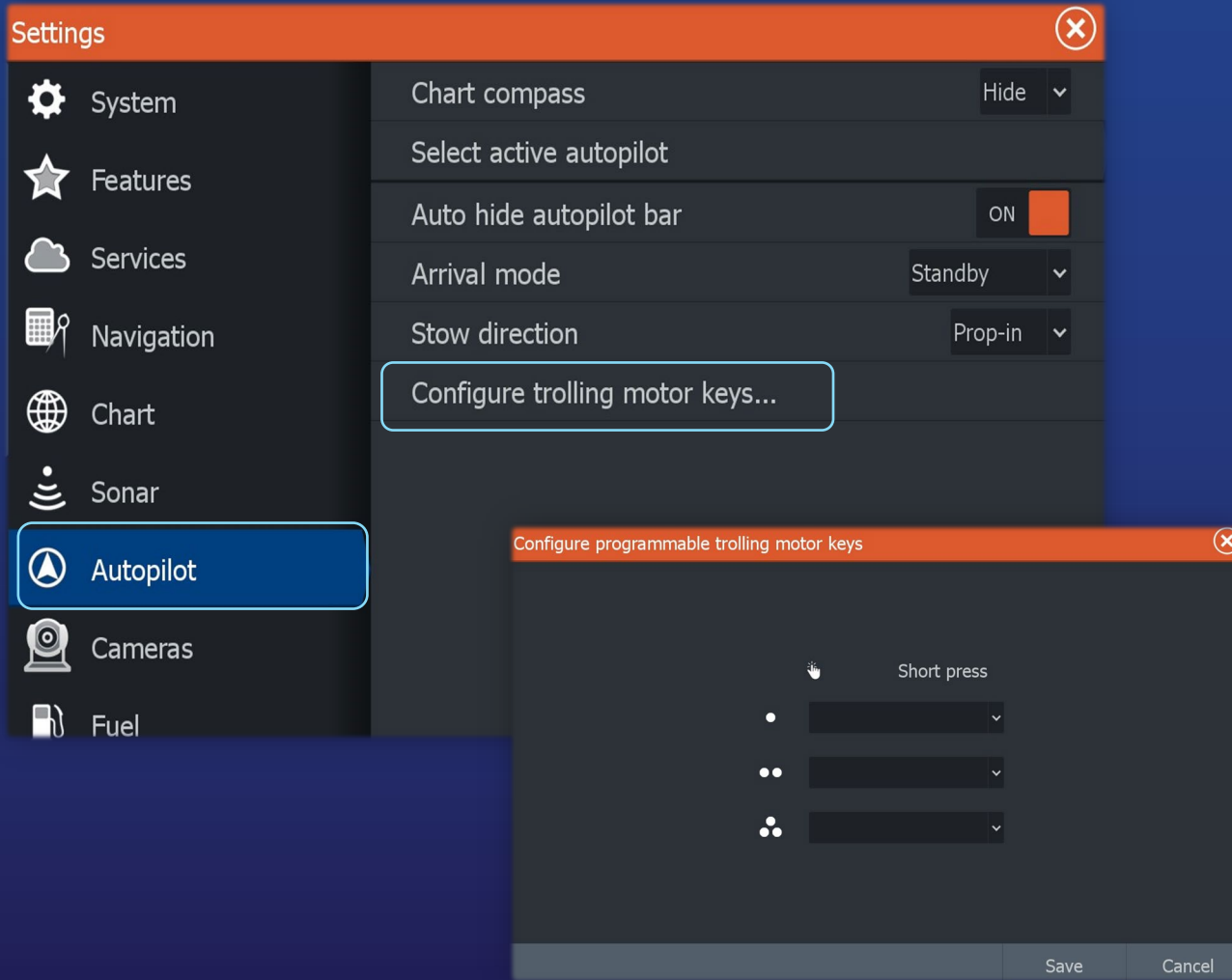
Recon™ Bluetooth® Device Examples



Device 1	Device 2	Device 3	Device 4	Device 5
<ul style="list-style-type: none">FreeSteer™ Joystick Remote 	<ul style="list-style-type: none">Advanced Wireless Pedal 	<ul style="list-style-type: none">FreeSteer™ Joystick RemoteAdvanced Wireless PedalCompact GPS remoteMobile App	<ul style="list-style-type: none">FreeSteer™ Joystick RemoteAdvanced Wireless PedalCompact GPS remoteMobile App	<ul style="list-style-type: none">FreeSteer™ Joystick RemoteAdvanced Wireless PedalCompact GPS remoteMobile App

- Maximum 5 Bluetooth® devices can be paired at one time
- FreeSteer™ Joystick remote & Advanced Wireless Pedal paired out of the box leaving three open pairings for freshwater models

Programmable Key Functions



Mark GPS Waypoint



Prop On/Off (Constant)



Course Lock



Heading Lock



Anchor Lock



Cruise Control



Power-Pole® Up



Power-Pole® Down



Ghost® 360 Start/Stop



ActiveTarget® Forward Range +



ActiveTarget® Forward Range -



ActiveTarget® Down Range +



ActiveTarget® Down Range -



MFD Integration

Sonar

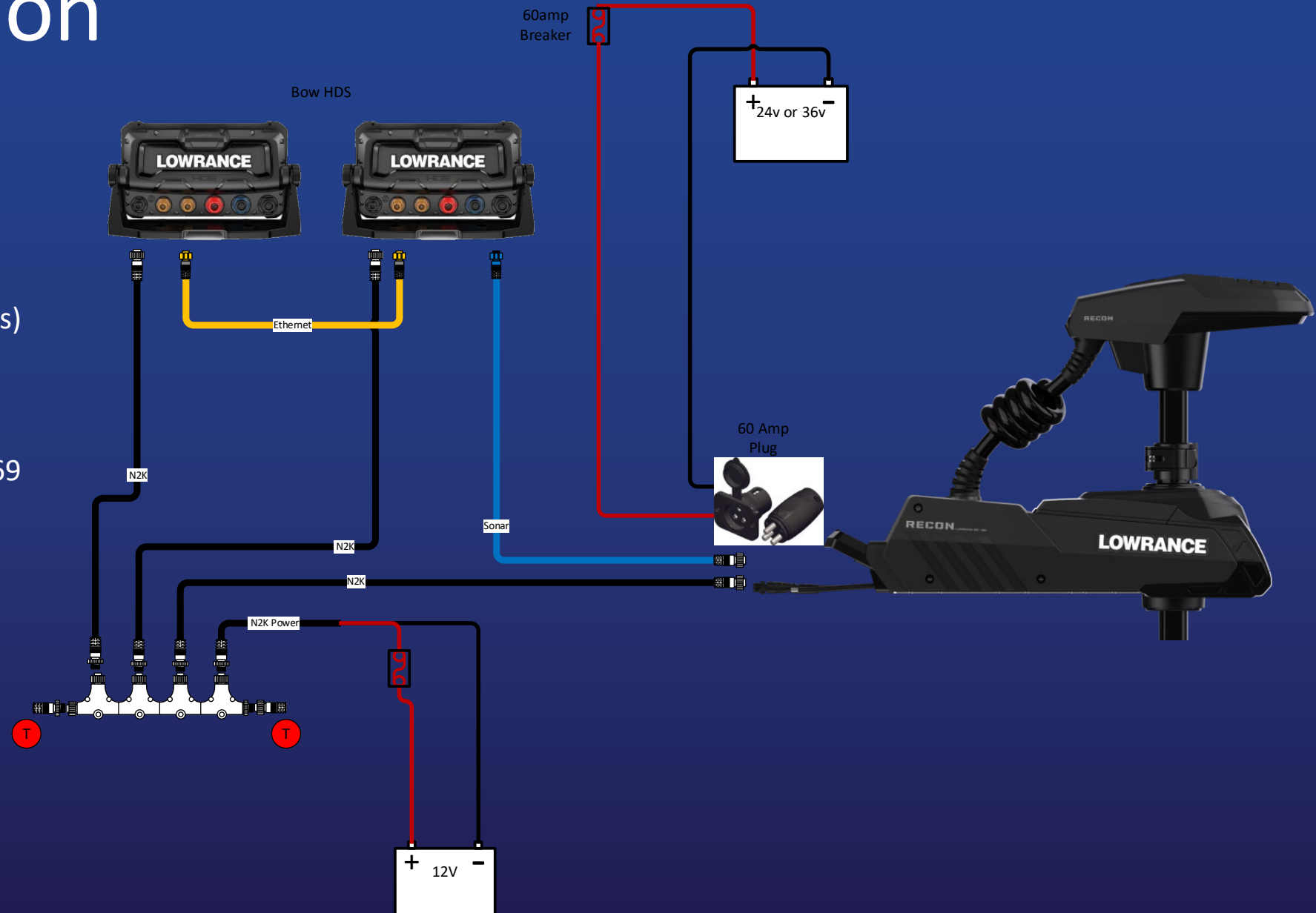
- Mini 9-pin to 9-pin Sonar Adapter Cable 000-15327-001
 - (included in box of FW motors)
- Sonar Channel 2 port

NMEA 2000®

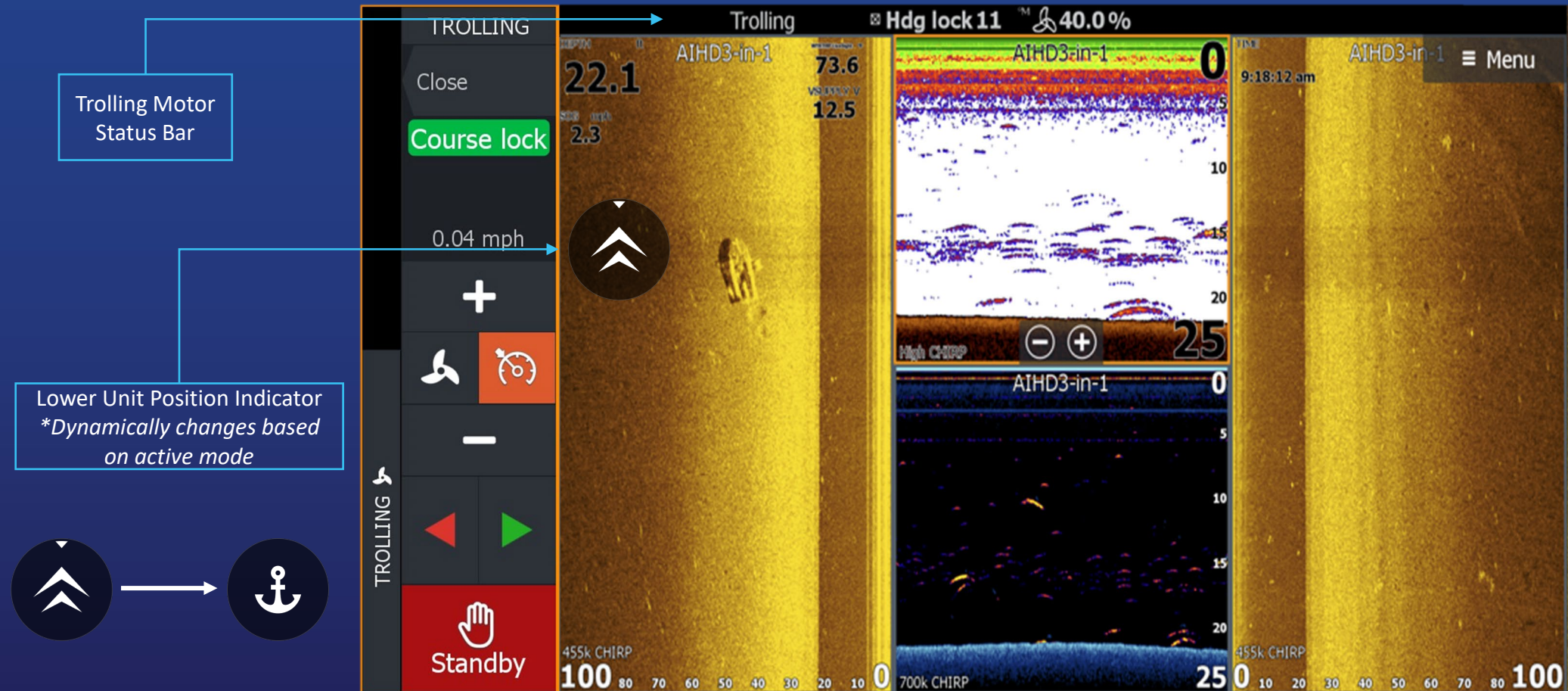
- NMEA 2000® Starter Kit 000-0124-69
 - Qty 1 NMEA 2000® T-Connector (included in box)

Power

- Minimum 8 AWG wire
- Minimum 60-amp plug/receptacle
- Minimum 60-amp breaker



Multi-Function Display (NOS) Control Bar



Trolling Motor Accessory Portfolio



Electrical

Breakers

Plugs/Receptacles

NMEA 2000®



Mounting

Quick Release
Brackets

Hardware



Sonar

XDCR Nosecones

Adapter Cables



Props

Propellers

Hardware



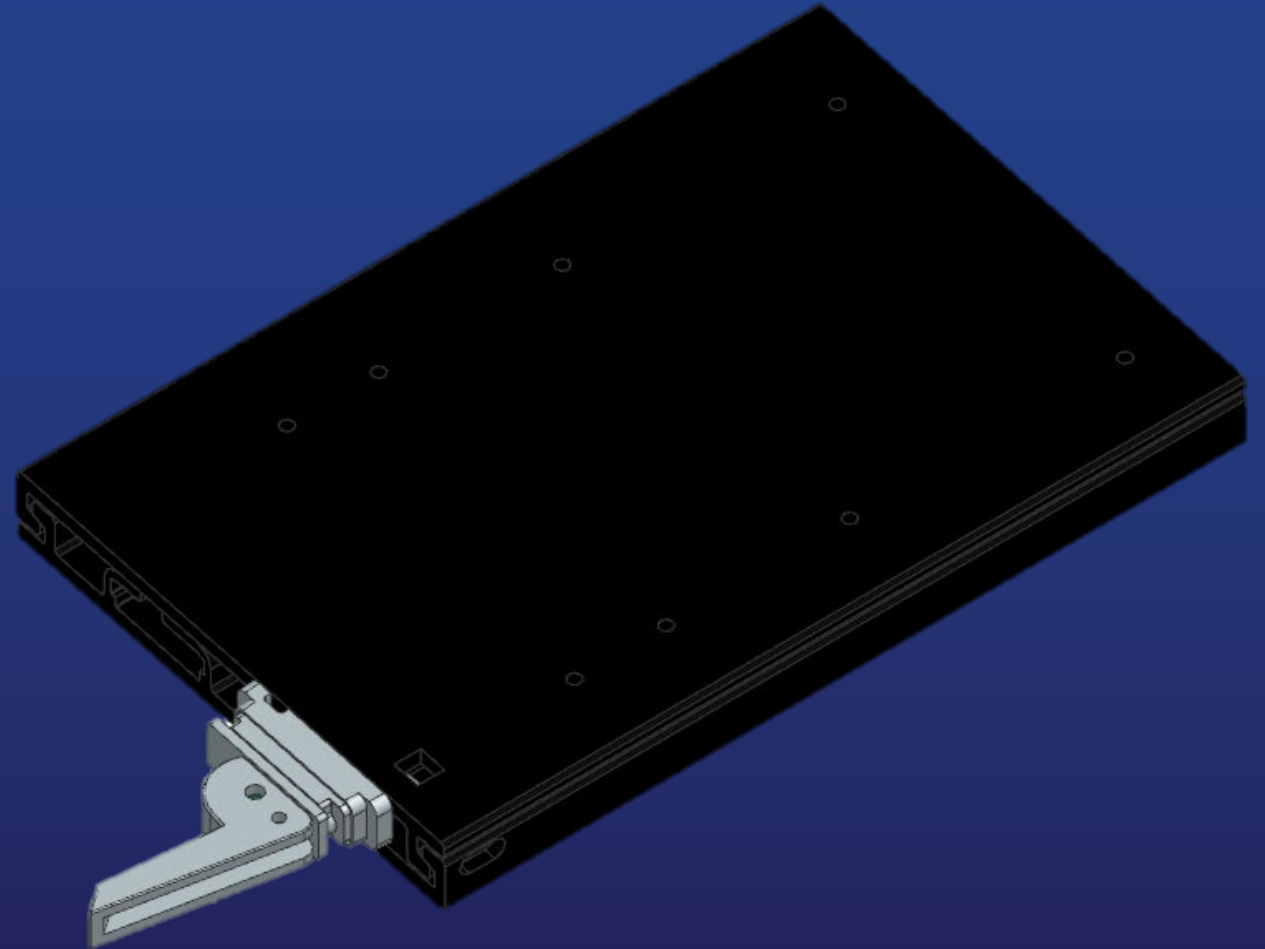
Remotes/Pedals

Trolling Motor Accessories Compatibility

NEW	PART NUMBER	DESCRIPTION	RRP \$	GHOST	RECON
NEW	000-16417-001	70A TROLLING MOTOR PLUG	34.99	✓	✓
NEW	000-16418-001	70A TROLLING MOTOR RECEPTACLE	40.99	✓	✓
NEW	000-16419-001	BREAKER KIT - 60AMP	58.99	✓	✓
NEW	000-16420-001	HEAVY DUTY QR BRACKET,COMPOSITE, WHITE	149.99		✓
NEW	000-16421-001	HEAVY DUTY QR BRACKET,COMPOSITE, BLACK	149.99		✓
NEW	000-16422-001	HEAVY DUTY QR BRACKET, ALUMINUM	249.99		✓
NEW	000-16398-001	RECON™ MOUNTING HARDWARE KIT	17.99	✓	✓
NEW	000-16176-001	FREESTEER™ JOYSTICK REMOTE – LOWRANCE®	299.99		✓
NEW	000-16160-001	FREESTEER™ JOYSTICK REMOTE – SIMRAD®	299.99		✓
NEW	000-16287-001	COMPACT GPS REMOTE	124.99	✓	✓
	000-15468-001	TMR-1 REMOTE	119.99	✓	
NEW	000-16409-001	REMOTE LANYARD	14.99	✓	✓
NEW	000-16177-001	ADVANCED WIRELESS FOOT PEDAL	349.99		✓
NEW	000-16353-001	RECON™ ACTIVE IMAGING™ 3-IN-1 NOSECONE	339.99		✓
	000-15723-001	SALTWATER PROPELLER ANODE	22.49	✓	✓
NEW	000-16178-001	RECON™ 2-BLADE WEEDLESS PROPELLER	59.99		✓
	000-15237-001	GHOST® 2-BLADE WEEDLESS PROPELLER	50.99	✓	
	000-0124-69	NMEA 2000® Starter Kit	\$76.99	✓	✓

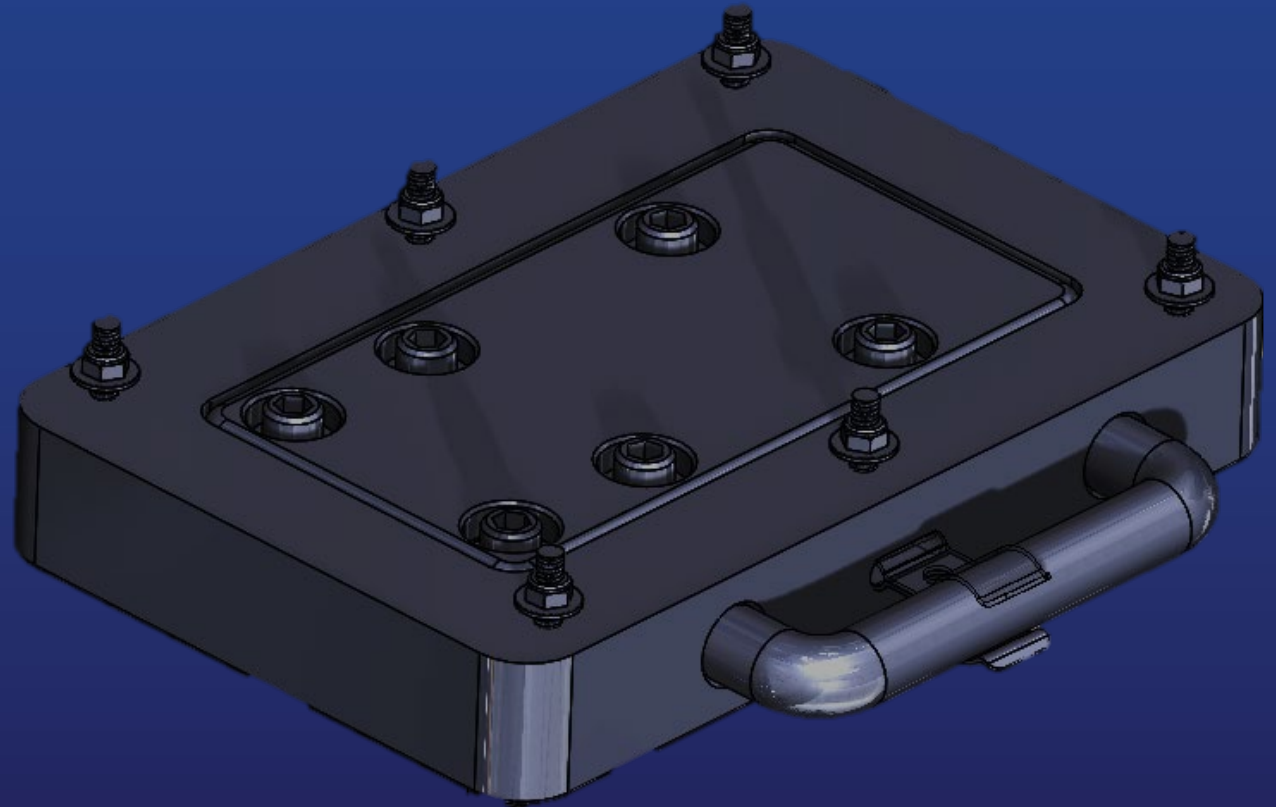
Heavy Duty Quick Release Bracket, Aluminum

- Compatible with Freshwater Recon™ models
- Dual cam-lock latch secures trolling motor in place
- Can be re-positioned 6" inward, ideal for covering of launching the boat
- Base plate hole pattern matches most existing hole patterns
- Security to lock the top plate with the base plate



Heavy Duty Quick Release Bracket, Composite

- Compatible with Freshwater & Saltwater Recon™ models
- Available in White and Black
- Base plate hole pattern matches most existing hole patterns
- Locking U-bar secures trolling motor to base plate
- Available security locking point



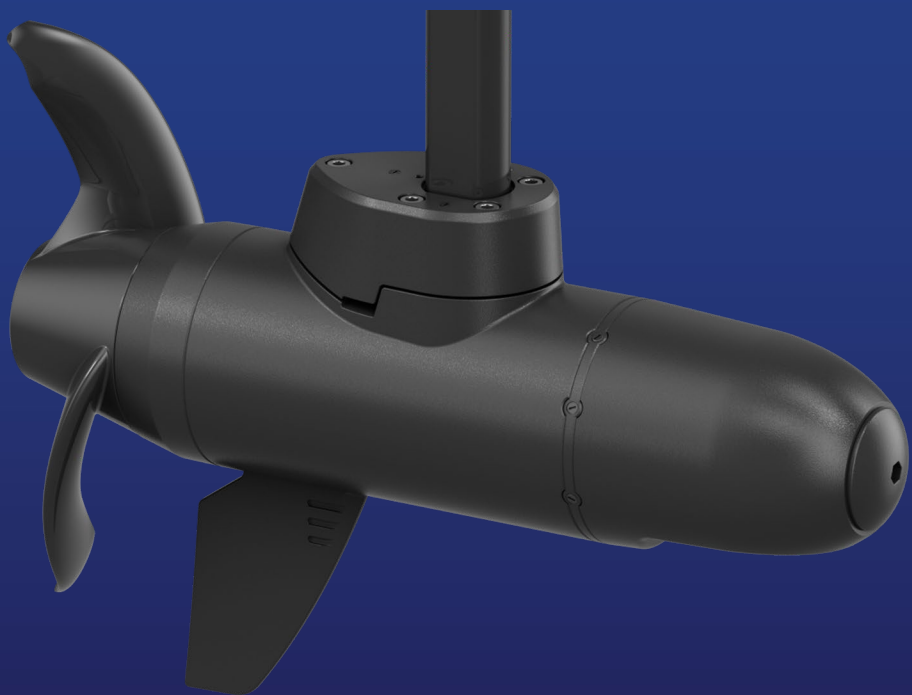
Recon™ 2-blade Weedless Prop

- Compatible with Freshwater & Saltwater Recon™ models
- Powerful, improved weedless design
- *Not* compatible with Ghost
- Includes Brass prop nut (no anti-seize required)
- Saltwater Anode (required, in box w/saltwater models)

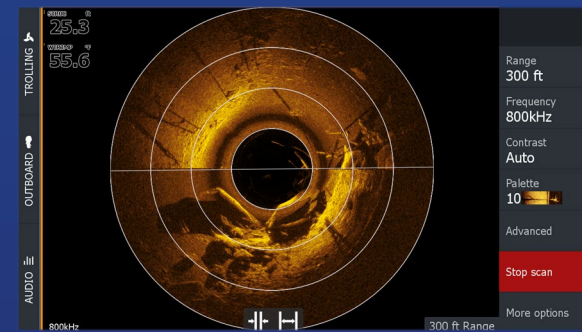
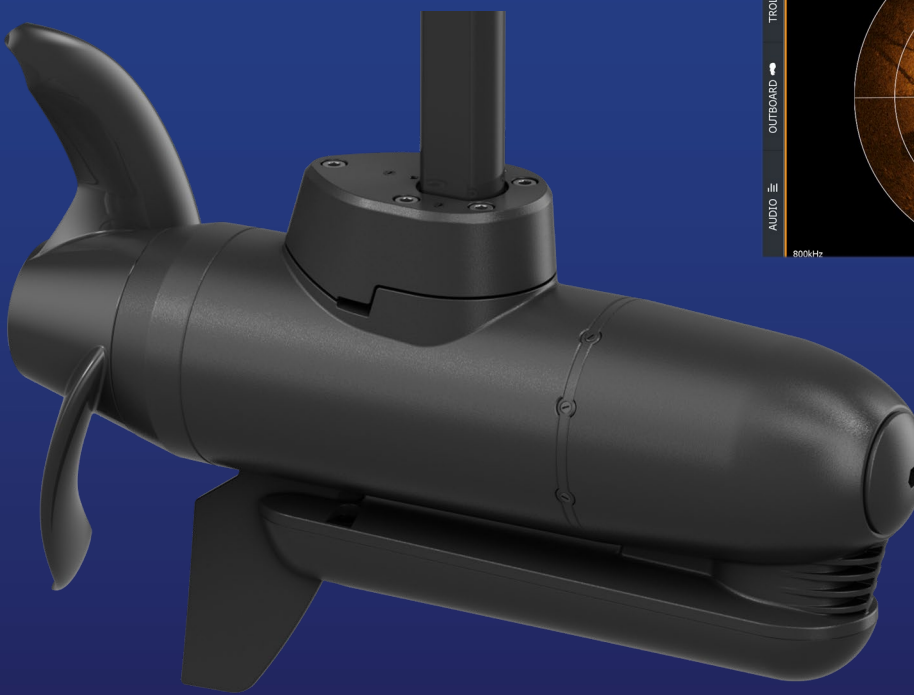


Recon™ Sonar Nosecones

HDI® Nosecone

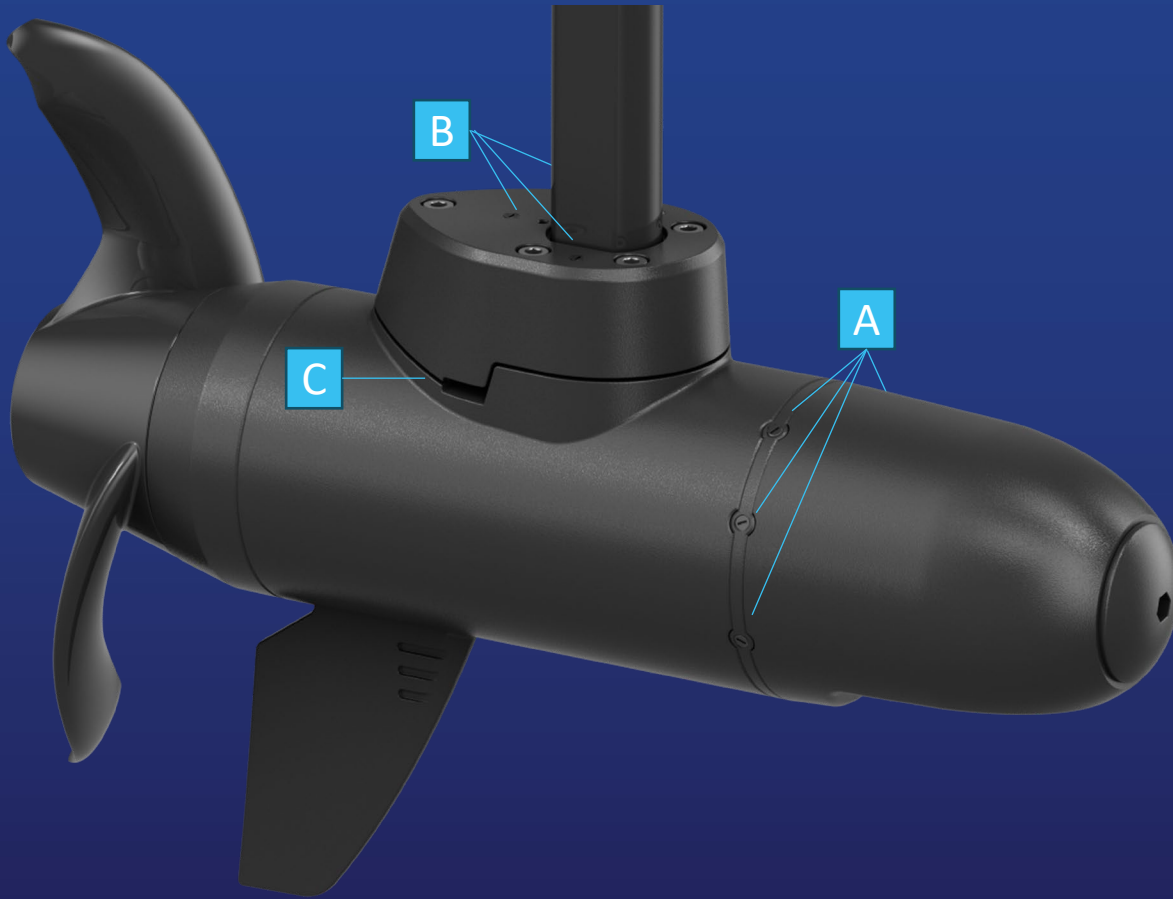


Active Imaging™ 3-in-1 Nosecone



**Note HDI® & Active Imaging™ 3-in-1 Nosecones only compatible with Recon™ freshwater models, not compatible with Ghost®*

Recon™ Lower Unit Accessory Attachment Points

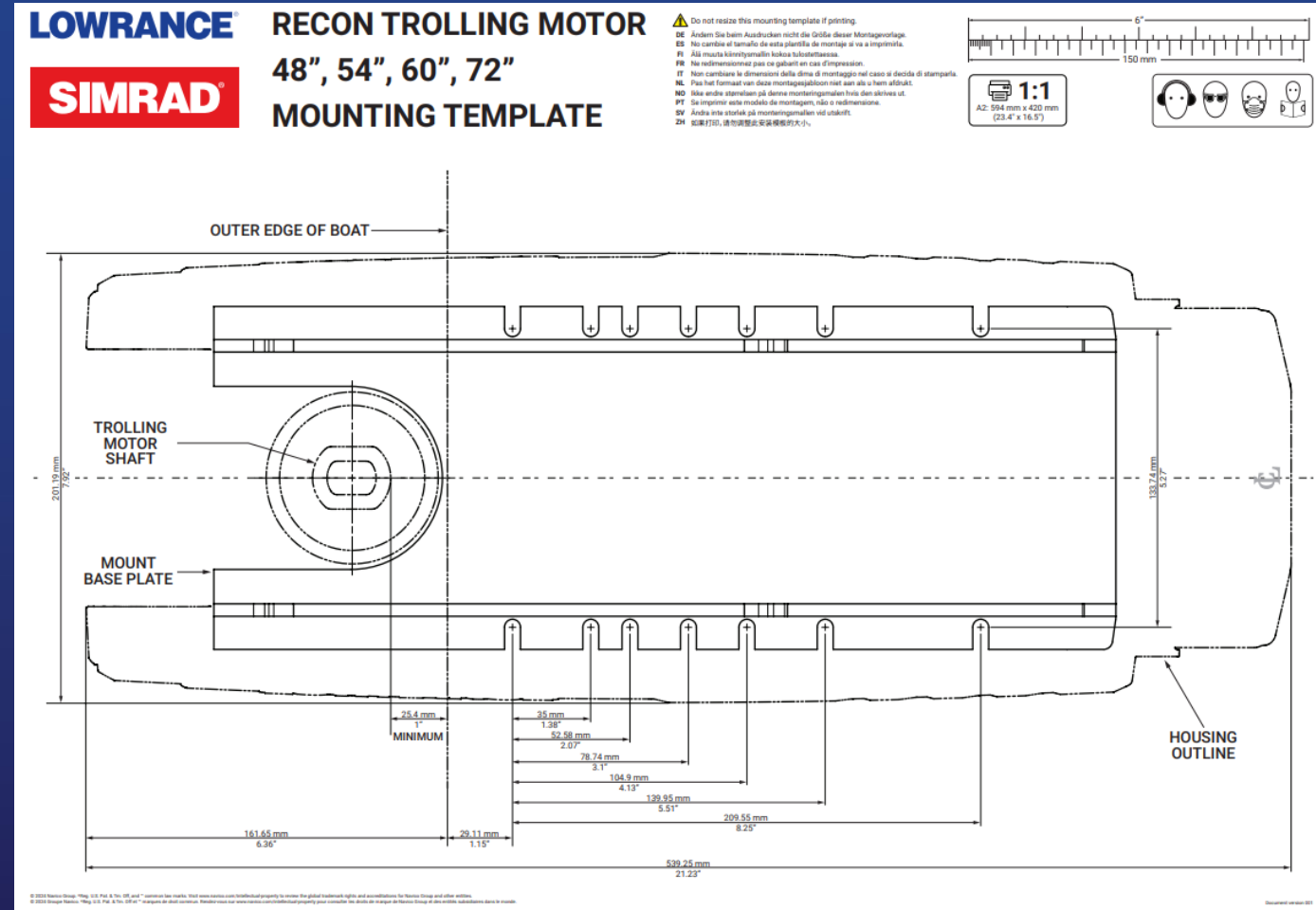


- A** Utilize 4 of the 6 ActiveTarget® lower unit mounting attachment points between the nosecone and the lower unit housing using (2) M5 x 12mm screws
- B** Utilize any of the 3 screw attachment points on the top of the lower unit tower
- C** Utilize top of the lower unit tower through-hole for hose clamp accessories

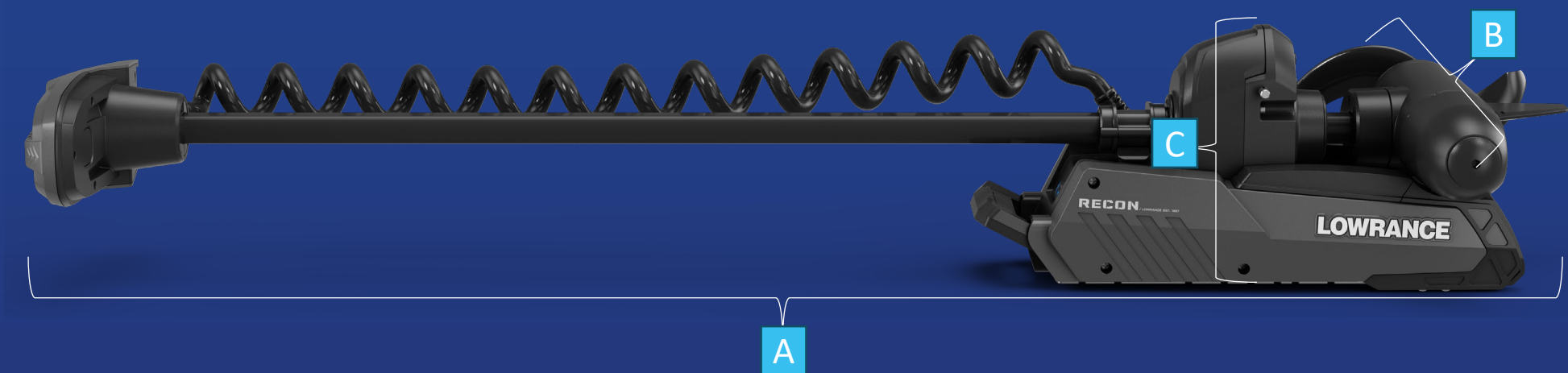
Installation

Recommended:

- 6 bolts (included) for mounting 36V, 4 bolts for 24V. If 6 bolts cannot be used, it is recommended to use a partially threaded bolt of appropriate length, a hard material backing plate under mounting surface, and large fender washers to reduce risk of damage.
- > 1" spacing between trolling motor shaft and outer edge of boat
- Minimum 60-amp breaker and/or plug & receptacle
- 4 to 8-gauge wire depending on distance between battery and trolling motor
- Shafts >60" to have the head or shaft of the motor stabilized to reduce bounce while stowed which could hit boat surfaces
- NMEA 2000™ network (T-connector included in box)
- Compatible Lowrance® Multi-function display



Dimensions – Recon™ Motor Stowed



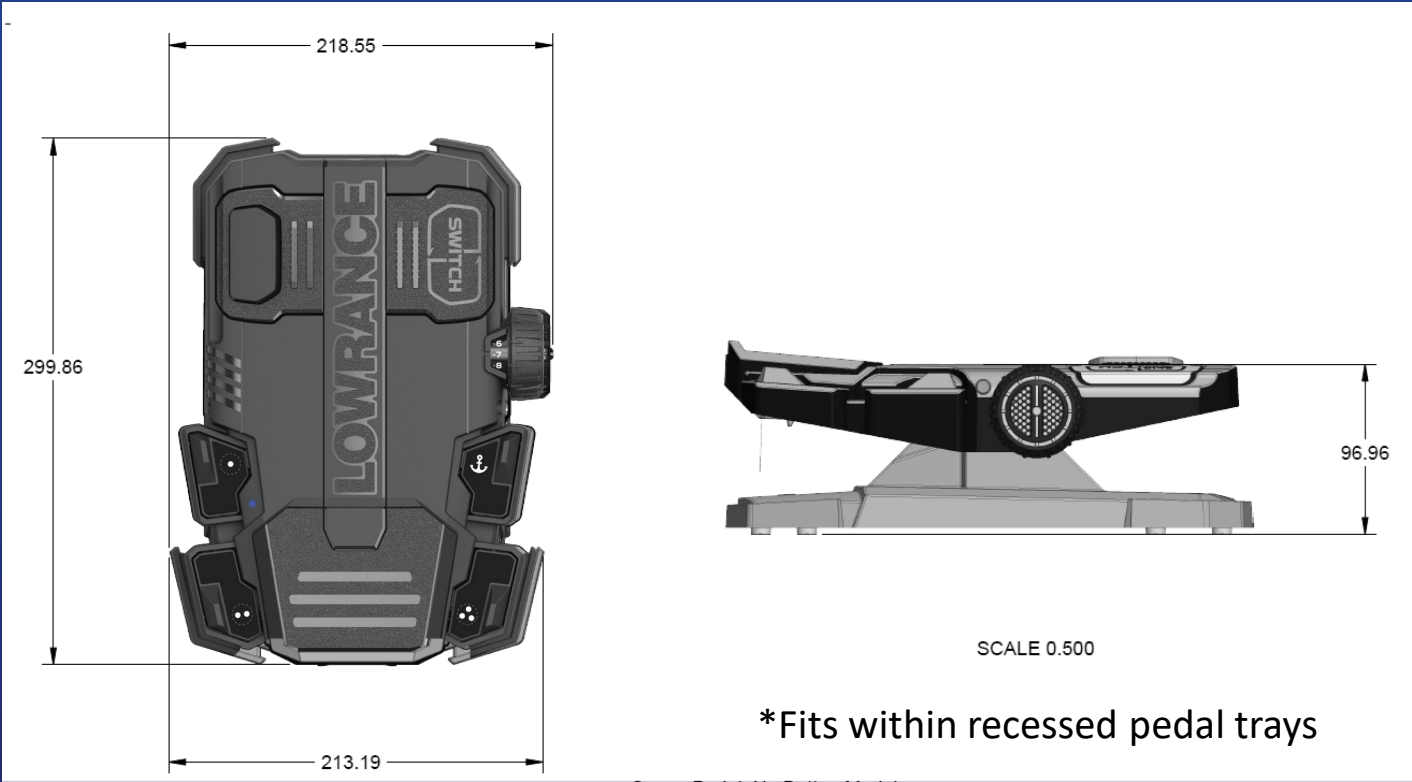
Stowed Position	48"	54"	60"	72"
A Length (mm)	1546.3 (60.87")	1698.5 (66.87")	1850.9 (72.87")	2155.7 (84.87")
B Width (mm)	404.38 (15.92")	404.38 (15.92")	404.38 (15.92")	404.38 (15.92")
C Height (mm)	244.77 (9.636")	244.77 (9.636")	244.77 (9.636")	244.77 (9.636")

- Recon™ mount dimensions are less than or equal to Minn Kota Terrova brushed and Xi5 motors.
- Recon™ has a small, lightweight design making it easier to mount than the leading competitor Brushless motor

Dimensions – Advanced Wireless Foot Pedal



With Lower Key Module	
Length	360.4mm (14.2")
Width	218.6mm (8.6")
Height	97mm (3.8")



Without Lower Key Module	
Length	300mm (11.8")
Width	218.6mm (8.6")
Height	97mm (3.8")

Dimensions – FreeSteer™ Joystick Remote



Length	141.5mm (5.6")
Width	61mm (2.4")
Height	50.5mm (2.0")



Recon™ Box Contents

Part Number	Description	FreeSteer™ Joystick Remote w/ Lanyard	Mounting Hardware w/Brass Nut	Manuals & Literature	Recon™ Prop w/Brass Nut	Prop Anode	HDI® Transducer Nosecone	Mini 9-pin Transducer Adapter	Advanced Wireless Pedal	12V Pedal Power Cable
RECON™ Freshwater										
000-16172-001	RECON™-FW 48_GPS_HDI FOOT PEDAL	✓	✓	✓	✓		✓	✓	✓	✓
000-16173-001	RECON™-FW 54_GPS_HDI FOOT PEDAL	✓	✓	✓	✓		✓	✓	✓	✓
000-16174-001	RECON™-FW 60_GPS_HDI FOOT PEDAL	✓	✓	✓	✓		✓	✓	✓	✓
000-16175-001	RECON™-FW 72_GPS_HDI FOOT PEDAL	✓	✓	✓	✓		✓	✓	✓	✓
RECON™ Saltwater										
000-16179-001	RECON™-SW 54_GPS	✓	✓	✓	✓	✓				
000-16180-001	RECON™-SW 60_GPS	✓	✓	✓	✓	✓				
000-16181-001	RECON™-SW 72_GPS	✓	✓	✓	✓	✓				
000-16157-001	RECON™-SIMRAD®_SW 54_GPS	✓	✓	✓	✓	✓				
000-16158-001	RECON™-SIMRAD®_SW 60_GPS	✓	✓	✓	✓	✓				
000-16159-001	RECON™-SIMRAD®_SW 72_GPS	✓	✓	✓	✓	✓				

Technical Specifications

Trolling Motor	
Shaft Lengths	48", 54", 60", 72"
Usage	Freshwater and Saltwater
Mount Style	Pivot, Electric-Steer
Max Thrust	110 lbs (36V) 80 lbs (24V)
Voltage	Functional range: 16V - 46V Rated for 24V and 36V Deep-cycle Batteries
Steering	Remote, Foot Pedal, MFD
Compass	Internal
GPS	Internal; Dual Band GNSS Receiver
Max Amp Draw	58 amps RMS @ 36V 52 amps RMS @ 24V
Connectivity	NMEA 2000®, Bluetooth®
Motor Weight (60" FW model)	FW 60" = 42lbs/19kg SW 60" = 40lbs/18kg
Warranty	3 years, Lifetime Shaft

Technical Specifications

Advanced Wireless Foot Pedal	<i>(FW models)</i>
Dimensions	11 ¾" L, 8 ½" W, 3 ¾" H (w/o Lower Key Module) 14 ¼" L, 8 ½" W, 3 ¾" H (w/ Lower Key Module)
FlipSwitch™	Yes
Programmable Keys	6 total, plus dedicated Anchor key
Lower Key Module	Yes
Waterproof Rating	IPX7
Power	AA batteries (3 included) or 12v power lead w/20 awg wire leads (Included) Automatically on when wired

Sonar	<i>(FW models)</i>
Included	HDI® Sonar Nosecone
Supported Frequencies	Med/High CHIRP Sonar, 455/800 kHz imaging
User Upgradable Sonar	Active Imaging™ 3-in-1 Nosecone
Sonar output	Mini 9-Pin to 9-Pin Lowrance® Adaptor (included)

Technical Specifications

FreeSteer™ Remote	
Size (Length, Width, Height)	141.5mm (5.6") x 61mm (2.4") x 50.5mm (2.0")
Weight	Floating
Waterproof Rating	IPX7
Connectivity	Bluetooth® Low Energy v5.2
Range	25m minimum functional range
Batteries	AA Batteries (2)
Screen	2" LCD Transflective Color Display
Buttons	10 buttons (2 programmable) + Joystick, 4 backlit
Operating Temperature Range	-20°C to 60°C
Warranty	1 year

Technical Specifications

AutoPilot/Navigation Features	
Create Routes	Yes
Go-to Waypoint & Cursor	Yes
Anchor Lock	Yes
Anchor Jog	Yes
Course/Heading Lock	Yes
Turn Patterns	Yes
Depth Routing	Yes
Record/Playback Trails & Routes	Yes
Orbit waypoint	Yes
Anchor at a Distance	Yes

SERVICE

Recon™ Service Strategy

Get anglers back on the water by reducing service complexity

Focus

- Error codes provide fault detection
- Concise service kit offering reduces SKU count and complexity
- Increase self-service resources (videos, technical documentation)

Create user-serviceable kits

- Offer over-the-counter service kits with installation instructions using common tool sets
- Reduces incoming call volume to Technical Support team by enabling self-service
- Eliminate time at the dealer (travel, repair, pick up, install)
- Service on their schedule

Recon™ Serviceable Parts

User Serviceable Components:

- ✓ Upper Head Control Board + GPS
- ✓ Cosmetic Covers & Deploy Pedal
- ✓ Depth Collar
- ✓ Nose Cone(s)
- ✓ Foot pedal button module
- ✓ Foot pedal damper (pending DVP-200084 salt)
- ✓ Prop + Hardware
- ✓ Remote Battery Cover & Lanyard
- ✓ Rotating & Static Cradles
- ✓ Head Wedge Kit
- ✓ Mount LED & PCB Board
- ✓ Foot Pedal
- ✓ Foot Pedal Buttons & Battery Cover

Service Center Components:

- ✓ Transmission Assembly
- ✓ Column, Tower Kit, and inner Cabling Loom (Better Lower Unit Sealing)
- ✓ Lower Unit
- ✓ Mount Extrusion and Linkage Kit
- ✓ Curly Cable

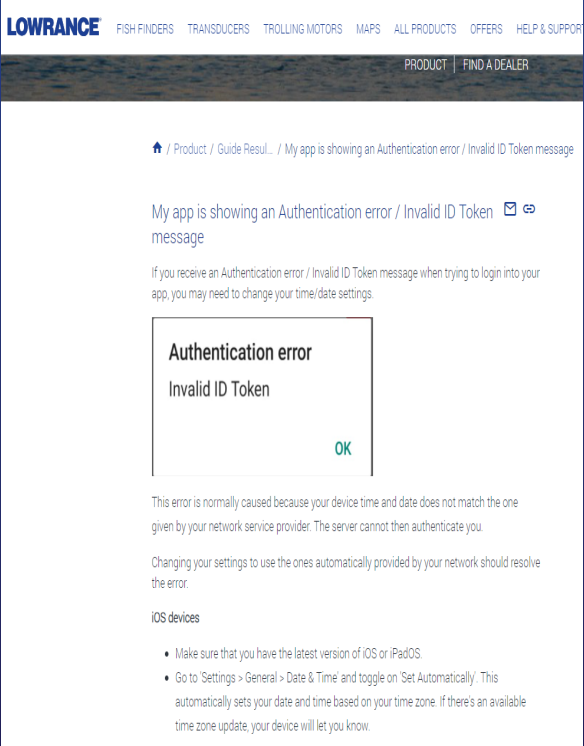
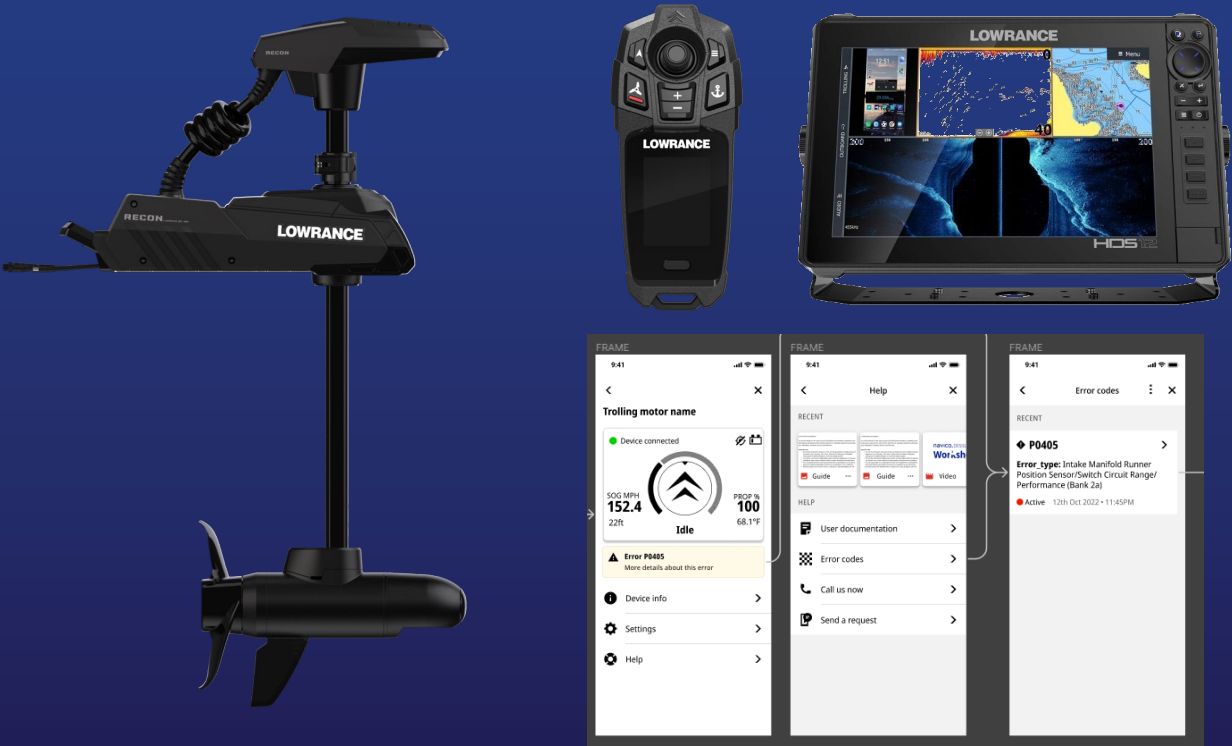
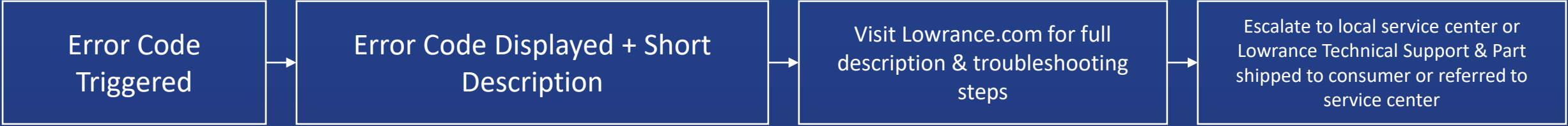
Note: Serviceable Components & Assemblies should have diagnostics or detectability (App). If a component cannot be diagnosed by the user and requires advanced tools/testing for replacement it would fall into an ASC service component

Error Code Descriptions

Error Type	Error code	Short Desc	Detailed Description	App Alert
System	S001	High speed deployment detected	Deployment detected while moving during excessive speed	N
Voltage	V001	Voltage Below Spec	Input Voltage to the controller is low - This could be from a loose connection or weak power source	Y
Voltage	V002	Voltage Above Spec	Input Voltage to the controller is high - This could be caused by improper wiring/rigging	Y
Transmission	T001	Motor is not Deployed	Trolling motor is reporting as stowed while steering commands were given- verify the motor is deployed	Y
Transmission	T004	Transmission Circuit Voltage High	Input Voltage to the steering Motor is High	N
Service Software	X002	Software Mismatch	Review app for updates to trolling motor and paired controlling devices.	Y
BTE	B003	No Controlling Devices Paired	There are no controlling devices detected to the trolling motor - Ensure you are near the trolling motor with a controlling device powered ON	Y
BTE	B002	Paired Bluetooth Device - Disconnected	A paired Bluetooth device has been disconnected unexpectedly - This device could be out of range, or has been powered off	A
Calibration	C003	GPS Re-Calibration Recommended	The trolling motor has detected that a Re-Calibration of the GPS is recommended for accurate auto pilot operation	Y
Lower Unit	L003	Lower Unit - Water Ingress	Water has been detected in the Lower Unit - Stow the motor and remove power to the trolling motor. Contact Customer Support	Y
Lower Unit	L005	Lower Unit Over Temp Alarm	Lower Unit is over temperature -Stow the trolling motor, then Power Off the trolling motor and clear any debris from the propeller	Y
GPS	G001	GPS Insufficient for Stable Autopilot	Insufficient GPS to enter Autopilot commanded mode	N

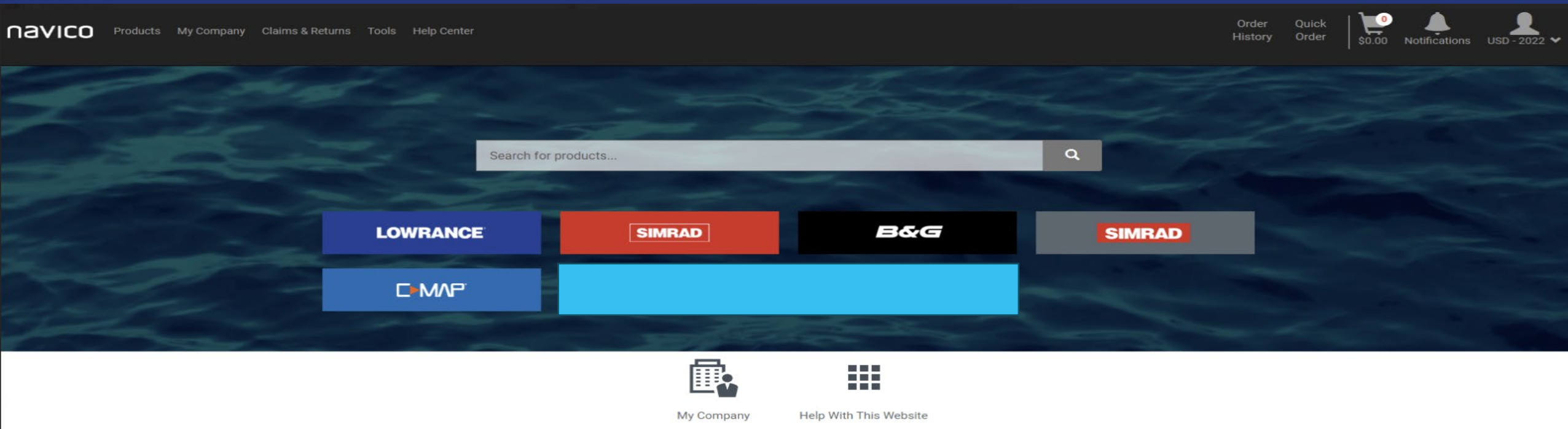
Error Code Example

- Example of flow? what is on Remote, MFD, App

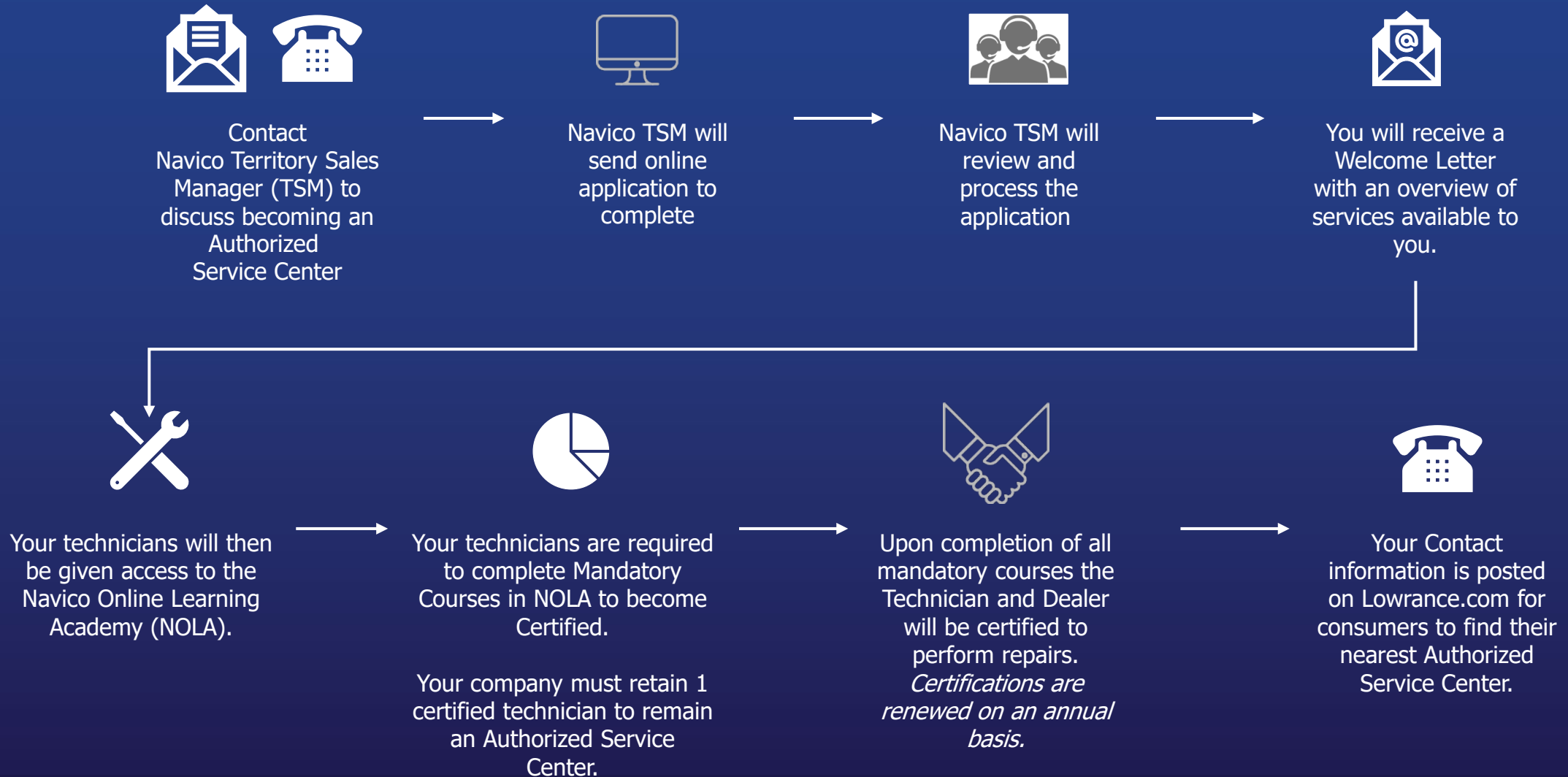


Service Resources

- **Customer Portal** (customerportal.navico.com)
 - **System Builder** for boat networking reference tool
 - **Navico Online Learning Academy (NOLA)** provides access to *webinars and training courses and service manual*.
 - **Knowledge Base** provides answers to FAQs
 - **Asset Bank** provides marketing images, technical and sales bulletins
 - **Claims & Returns** provides forms for replacement parts and warranty claims
- **Parts Request** – trollingmotorparts@navico.com
- **Dealer Support** (*Diagnosis Assistance, Claim Assistance, Parts*)– 1-800-324-4737
- **Consumer Help & Support, Online Videos, Guides** – <https://www.lowrance.com/help-and-support/>
 - Dealers will have access to additional resources through Customer Portal
- **Software/Install Manuals** - <https://downloads.lowrance.com/>
- **Digital Service Manual** – [HERE](#)
- **Monthly Service Email Newsletter**- Sent from Feb 1st to Nov. from Product Team



Service Center Onboarding




System Builder Capture

- System Builder will be loaded as Ghost & Recon separate
- Segmented Lowrance and Simrad for customer who may only have access to one brand

NAVICO GROUP

HomeSettingsHistorySoftware5YUDownloadsToolsChanges

Brand  Logout

Copyright © Navico Group 2024. All rights reserved.

Mathew Hooper - mathew.hooper@navico.com - New Zealand - APAC - 2024



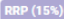



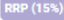



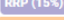

LOWRANCE

RECONGHOSTACCESSORIESMOUNT PARTSHEAD PARTSLOWER UNIT PARTSPEDAL PARTS

TOOLS

SHAFT PARTS

GHOSH™ Trolling Motors

	Part Number	Description	NZD
	000-16174-001 	RECON-FW 60_GPS_HDI FOOT PEDAL Recon freshwater trolling motor 60", HDI Transducer, Foot pedal and Remote	AMER Stock: 463  EMEA Stock: 14  APAC Stock: 12 ROA Stock: 34
<div>Add</div>			
	000-16175-001 	RECON-FW 72_GPS_HDI FOOT PEDAL Recon freshwater trolling motor 72", HDI Transducer, Foot pedal and Remote	AMER Stock: 64  EMEA Stock: 21  APAC Stock: 8 ROA Stock: 4
<div>Add</div>			
	000-16179-001 	RECON-SW 54_GPS Recon Saltwater trolling motor 54", Remote	AMER Stock: 69  EMEA Stock: 26  APAC Stock: 3 ROA Stock: 3
<div>Add</div>			

MARKETING & ACTIVATION SUPPORT

Launch Schedule

KEY LAUNCH EVENT	DATE
Dealer Reveal	19-Jun-2024
Open Order Books (Main SKUs)	19-Jun-2024
Open Order Books (Full)	1-Aug-2024
Public Reveal	ICAST 2024
*Commercial Shipping	Shipping Q4

*Commercial ship dates may vary by region. APAC/EMEA: Shipping Q1 2025

FAQ's

Q: Can the RECON™ Trolling Motor receive software updates?

A: Yes, software updates can be done via Lowrance mobile app or through the MFD using NMEA 2000 network.

Q: What Lowrance MFDs are compatible with RECON™ Trolling Motors?

A: HDS® Pro, HDS® Live, HDS® Carbon and Elite FS®

Q: Can the TMR-1 Remote for Ghost® be used with the RECON™ Trolling Motors?

A: No

Q: What additional products/options are needed if I wish to network my RECON™ Trolling Motor to a MFD?

A: A NMEA 2000® starter kit (000-0124-69) will need to be purchased separately, if you do not already have a NMEA network present on your boat. All versions and models come with the T-connector, should you already have a NMEA network present on your boat, which will allow you to connect the Trolling Motor into the existing network. NOTE: N2K Drop Cable's to clean up cable routing are available from Lowrance or Ancor

Q: Are ActiveTarget® and ActiveTarget® 2 compatible with RECON™ Trolling Motors?

A: Yes, these transducers can be mounted

Q: Will the GHOST® nosecone fit RECON™?

A: No

Q: Will the mounting holes match MotorGuide & GHOST®?

A: Yes, but the installer will need to ensure that the shaft is at least 1.25" inch from the rub rail in the deployed position.

FAQ's

Q: Where is the best place to mount the RECON™ Trolling Motor?

A: These are bow mounted Trolling Motors.

Q: Is the Lowrance® RECON™ foot pedal compatible with the GHOST® Trolling Motor?

A: *No*

Q: Will the RECON™ foot pedal work with the Saltwater RECON™ Trolling Motor models?

A: *Yes*

Q: What voltage requirements are needed for the RECON™ Trolling motors?

A: *24V or 36V*

A: Can the remote / app receive diagnostics?

Q: *Yes, the remote will display error codes and the codes can be referenced on the app.*

A: Does the GHOST® prop fit RECON™?

Q: *No*

A: Is RECON™ lithium battery compatible?

Q: *Yes. Depending upon the model, a 24V or 36V lithium battery will work with the Trolling Motor.*

FAQ's

Q: How many devices can be connected to one trolling motor?

A: Up to 5 device can be connected at once. This would be a mix match with the bluetooth pedal, remote, and/or app.

Q: If multiple devices are connected, which device will be in control?

A: The device with the latest command will take control of the action requested.

Q: Can the RECON™ Freshwater version be used in brackish waters, like Ghost if the anode is used?

A: Freshwater Recon does not have Chromate Coating, nor is it planned to include an anode. For a Freshwater unit to be used in Salt/Brackish water - The customer would need to purchase the anode prop kit + rinse the motor with freshwater after each use. Or purchase the Saltwater Recon.

Q: Will there be 12V models available?

A: Recon is available in 24/36v brushless configuration only. Future families will be added that will include a 12v variant.

Q: How do you Steer using the FreeSteer™ Remote, is it push down to click/activate, joystick taps, or joystick hold?

A: Joystick tap and release will enable Left or Right Rotation (upon release the motor will stop steering), Or steer by pushing & holding the joystick in the direction you wish to go towards. Clicking to activate is not necessary.

Q: What is the weight of the trolling motor?

A: A 60" model is ~42lbs

THANK YOU!