



Remove/replace a TB31/41/51 lid





On each lid there are two small holes on each side as shown by the arrow.



Use a metal rod of 1.5 mm in diameter, 10 cm long minimum to push the hinge inside

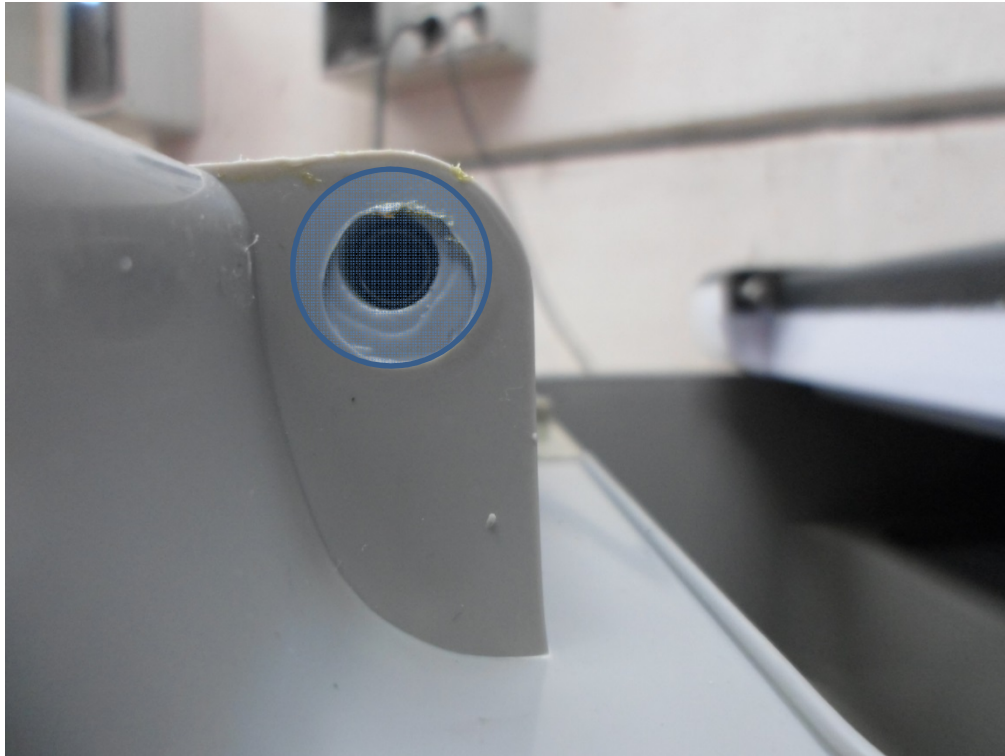


Insert the rod inside the hole and push all the way down. A small pressure is required. The hinge is pushed outward by a spring.



Attention: a spring pushes the hinge outward so gently lift up the lid or the hinge will be shot out.

Once the hinge is pushed all the way down gently lift the lid up.
Unlock the handle if necessary



The spring inside the hole



To replace the lid start first by applying the hinges, one on the lid and one on the box, see arrows



Start by inserting the hinge on the lid. A bit of pushing is required



With a finger push the hinge all the way down



Gently push the lid down until a «clack» is heard. Now the lid is replaced

Thank you for your attention

