

CLB Series Push Reset Thermal Circuit Breakers

- **Ratings:** 5–40A; 200A @ 250V AC Interrupt Capacity
- **Operating Temperature:** 14–140°F (-10–60°C)
- **Interrupting capacity:** 2500A
- **Resettable overload capacity:** 10 x rated current
- **Approvals:** UL, CUL, TUV, CE, UL1500, ISO8846 for ignition protection/marine

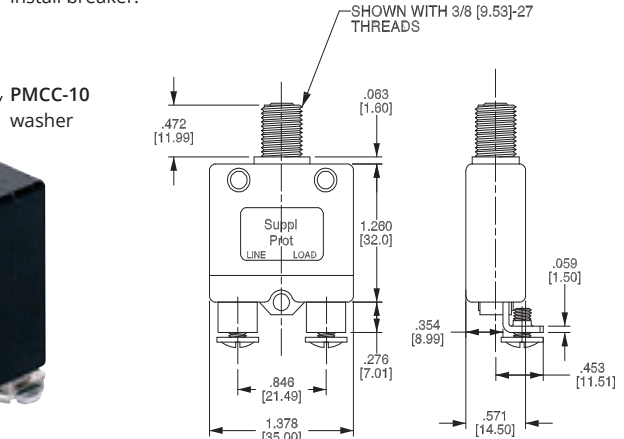
Rating (A)	Part #*	OEM #
5	CLB-05/DSP	CLB-05
10	CLB-10/DSP	CLB-10
15	CLB-15/DSP	CLB-15
20	CLB-20/DSP	CLB-20
25	CLB-25/DSP	CLB-25
30	CLB-30/DSP	CLB-30
40	CLB-40/DSP	CLB-40

*DSP versions include circuit breaker, washer and boot

Description	OEM #
Boot	CLB-BOOT
Washer	PMCC-10



CLB-BOOT
Boot required to install breaker.



RCD Panels

We supply two Residual Current Devices (RCD) ratings (16 & 32A). These also act as a circuit breaker (RCBO type), have an insulation rating of 400V AC, make/brake current of 6000A, a 30mA trip rating against electric shocks, and 300mA trip protection against fire risks. Due to the different mounting dimensions of the RCD's, these panels are made to be mounted separately from the main AC panel.

Rating (A)	Part #	HxWxD	HxWxD
16	900-RCD-16A	4.5" x 5" x 2.5"	115 x 127 x 65 mm
32	900-RCD-1X16-32A	4.5" x 5" x 2.5"	115 x 127 x 65 mm
16x2	900-RCD-2X16A	4.5" x 5" x 2.5"	115 x 127 x 65 mm
32x2	900-RCD-2X32A	4.5" x 5" x 2.5"	115 x 127 x 65 mm
16x1, + 32x1	900-RCD-32A	4.5" x 5" x 2.5"	115 x 127 x 65 mm

Cutout size - 3/8" (10 mm) inside all external edges



900-RCD-16A



900-RCD-2X16A

CB Options

- 230V

Rating (A)	Part #	Type
16	NHP-RCBO-16A30MA-1D	Residual CB Overload
16	NHP-RCBO-16A30MA-2D	Residual CB Overload
32	NHP-RCBO-32A30MA-1D	Residual CB Overload
32	NHP-RCBO-32A30MA-2D	Residual CB Overload



RCBO
(see chart)



MCB-3WENC
6.3" x 3.6" x 3.5"
160 x 92 x 90 mm



124001000
7.87" x 4.33" x 4.53"
200 x 110 x 115 mm

For installations in Australia and New Zealand to comply with AS/NZ3004 an approved double pole mains circuit breaker must be mounted upstream of the BEP Control Panel. The MCB-3WENC is an enclosure with IP65 rating. The enclosure and CB are ordered separately. The Shore Fix is already assembled, no additional item parts need to be ordered.