

All-Round Fixed Base Lights

LIGHTARMOR™ LED Waketower All-Round Light

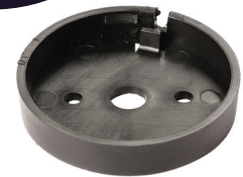
Compact size designed for installation on a wakeboard tower, radar arch, hard top, poling platform, tuna tower, or other fixed structure. Direct LED replacement for Attwood's incandescent 5940 series. For pleasure craft up to 39.4 ft (12 m).

- Two-mile, 360° visibility
- Fully sealed electronics
- Tab release

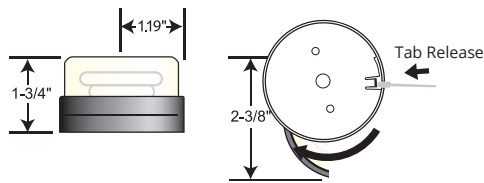
Description	OEM Part #	Part #
6" Wire Leads	5580-1	5580A7
12" Wire Leads, No Sleeve	5582-1	—
16' Wire Leads	5581-1	—
Replacement Base	5580-03	—



5580



5580-03



Incandescent All-Round Deck Mounted Lights

7-inch leads for connection to 12V DC power supply. Bayonet lock secures lens and cover to base and provides easy lamp replacement. Includes a 9W wedge base lamp. Installs directly to deck with two required #10 fasteners.

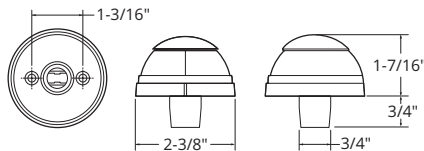
Deck Mount

Light mounts flush, making it ideal for installation atop the tow piece on ski or wakeboard boat towers.

Description	OEM Part #	Part #
Deck Mount, Black	—	5940-7



5940



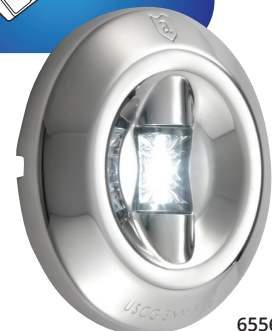
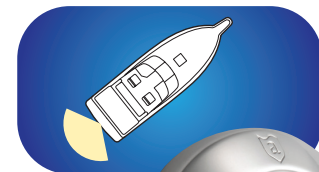
Transom Lights

LED 3-Mile Transom Light

For pleasure craft up to 65.6 ft. (20m) in length. Creating 135 degrees of light at 3-mile of visibility. A truly unique design, Attwood's transom light includes a luxurious electropolished stainless cover that is both durable and great looking. Easy-to-install surface mount design utilizes a snap feature to eliminate exposed fasteners. 3" diameter.

- One of the thinnest lights available - 1/2" height
- Compatible with both Attwood and Perko® mounting holes
- Meets standards ABYC C-5 & A-16, USCG CFR 183.810

Description	OEM Part #	Part #
Stainless Steel	6556-1	6556-7



6556