



CLIMATE CONTROL SYSTEMS / BOATS

WARM AND COZY – AT SEA, IN ANY WEATHER

Heaters for boats, yachts, and ships

ALWAYS COMFORTABLY WARM AND DRY IN YOUR CABIN

Waves, wind, rain, and cold – for passionate skippers, the changing weather at sea has its own special appeal. But after a tough day on deck, you deserve some rest and dry clothing!

Boat heaters from Eberspächer make sure you and your crew remain cozy and comfortable below decks. They provide the comfortable climate you desire quickly, reliably and with minimum noise while dehumidifying the boat at the same time. This means your clothes can be dried below deck hassle-free and condensation can be effectively prevented. You can venture into rougher terrain with peace of mind and even take exciting cruises during cooler seasons!



THE RIGHT SOLUTION FOR ANY TYPE OF BOAT

Owners are individualists – and every boat has its own special quirks and characteristics that an Eberspächer marine heater must cope with: smaller boats require solutions that are different from 65-foot yachts. Whether your boat is a sailboat or a motor boat – it is important to choose the right heating system. And the selection of Eberspächer products is big enough for all your needs. Eberspächer always has the right solution for your requirement!

That's why Eberspächer offers two different systems for you to choose from. Eberspächer air heaters focus on providing heat for the interior, thereby creating a snug, cozy atmosphere especially quickly. Eberspächer water heaters generate even heat distribution and, together with a boiler for your tap water, ensure that in the shower or in the galley hot water is available on demand. In addition, Eberspächer offers a wide range of sophisticated accessories and state-of-the-art control units for your new boat heater. A cold and damp cabin is a thing of the past thanks to Eberspächer.





AIR HEATERS EBERSPÄCHER AIRTRONIC

Using an Eberspächer Airtronic heater quickly and easily provides you with just the right temperature – also ideal for drying clothing and dehumidifying the interior. And because it is extremely efficient and quiet, using it even for long periods or at night is no problem. You can precisely control the temperature yourself – how warm it should be in your cabin during the day and night.

AIR HEATER ADVANTAGES:

- Exceptionally fast interior air heating
- Extremely low fuel and electricity consumption
- Automatic interior temperature control with temperature pre-setting
- Dehumidifies the interior via warm air outlets and prevents the formation of condensation
- Retrofitting is quite easy even with long air ducts
- Fuel is supplied from the boat tank
- Suitable for fresh air operation

AIRTRONIC 3 ADVANTAGES:

NEW

- Runs extremely quietly:
 - Enjoy some calm and tranquility: Dynamic, stepless heating performance control ensures whisper-quiet operation by switching the heater on and off as little as possible.
 - Optimized temperature sensor for precise heating performance control
 - Virtually silent fuel supply thanks to a new, electrically controlled metering pump
- Brushless motor for increased service life
- A wide range of heaters to suit any heating requirement from 2 kW to 8 kW
- Additional installation positions possible



EBERSPÄCHER AIRTRONIC

THE RIGHT AIR HEATER FOR EVERY NEED

AIRTRONIC S3 COMMERCIAL



- Heater with max. 2.2 kW heating performance
- Small dimensions, optimal for cramped installation spaces

Version		D2L (diesel)
Voltage	V	12*
Heating performance control		stepless
Heating performance	kW	0.85 to 2.2
Electrical power consumption	W	6 to 28
Fuel consumption	l/h	0.1 to 0.28
Weight	kg	2.5
Main dimensions L x W x H	mm	310 x 115 x 122

* Also available as a 24 V diesel version. Please see our website for more details.

AIRTRONIC M3 RECREATIONAL



- A heater developed specifically for boats and motor homes; high air throughput suitable for long, complex heating air ducting
- Heater with powerful heating performance up to 4 kW
- Compact dimensions

Version		D4R (diesel)*
Voltage	V	12**
Heating performance control		stepless
Heating performance	kW	1.05 to 4.0
Electrical power consumption	W	7 to 53
Fuel consumption	l/h	0.11 to 0.51
Weight	kg	4.5
Main dimensions L x W x H	mm	371 x 140 x 150

* Can be used in motor homes and boats with long, complex heating air ducting, for example, if several rooms are to be heated.

** Also available as a 24 V diesel version. Please see our website for more details.



AIRTRONIC L3 COMMERCIAL/AIRTRONIC XL3 COMMERCIAL



- High-performance air heater with 6 kW heating performance for larger boats and yachts
- Largest air heater with 7.6 kW heating performance for very large interiors and boats (e.g. a sightseeing boat)

		L3 COMMERCIAL		XL3 COMMERCIAL
Version		D6L (diesel)		D8L (diesel)
Voltage	V	12	24	24
Heating performance	kW	1.5 to 6.0		2.0 to 7.6
Electrical power consumption	W	7 to 90		8 to 140
Fuel consumption	l/h	0.16 to 0.74		0.24 to 0.96
Weight	kg	7.0		8.5
Main dimensions L x W x H	mm	438 x 160 x 170		493 x 160 x 170



WATER HEATERS EBERSPÄCHER HYDRONIC

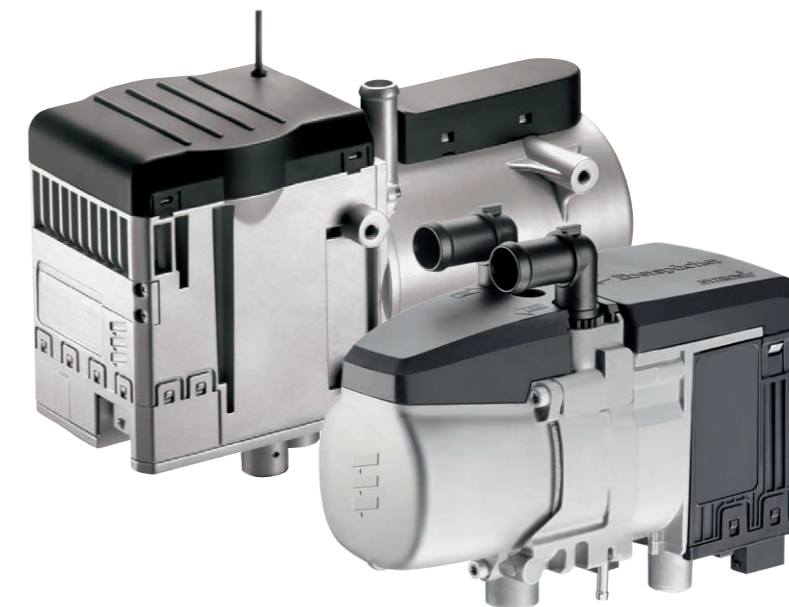
With Eberspächer Hydronic, you have an all-star on board. On the one hand, it provides powerful constant heat using convectors, just like your radiators at home. So the cabin is always pleasantly warm. On the other hand, Hydronic, together with a boiler, can also heat your tap water. After a cold day, a warm shower awaits you and water for washing dishes is guaranteed to be at the ideal temperature after dinner.

WATER HEATER ADVANTAGES:

- Continuous heat distribution, just like at home
- Extremely high heating performance up to 35 kW
- Individual temperature adjustment at every panel radiator
- No blower noises from panel radiators
- Can be used to heat tap water in combination with a boiler
- Runs quietly

ADDITIONAL FEATURES:

- Fuel is supplied from the boat tank
- Flexible installation:
 - possible in the engine room
 - small-diameter pipelines
 - need-driven heat output either via panel radiators or radiators with fan
- The engine can be pre-heated



EBERSPÄCHER HYDRONIC

THE RIGHT WATER HEATER FOR EVERY NEED

HYDRONIC S3 ECONOMY / COMMERCIAL

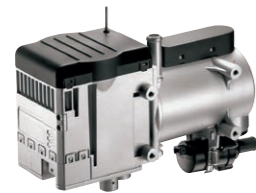


- Smallest water heater
- Available models 12V: 4.3 and 5.0 kW
- Available models 24V: 5.0 and 5.6 kW
- Stepless heating performance control

Version	Hydronic S3 Economy*	Hydronic S3 Economy*	Hydronic S3 Commercial*	Hydronic S3 Commercial*
Model (fuel)	D4E (diesel)	D5E (diesel)	D5L (diesel)	D6L (diesel)
Voltage	V	12	24	24
Heating performance	kW	1.3 to 4.3	1.3 to 5.0	1.3 to 5.6
Power consumption, heater	W	5 to 27	5 to 32	5 to 37
Power consumption, water pump	W	18	35	35
Fuel consumption	l/h	0.53	0,15 to 0.59	0,15 to 0.65
Dimensions L x W x H	mm	215 x 91 x 180 (with straight connection fitting)		
Weight empty	kg	2.0		

* For mains operation (230 V/50 Hz) e.g. in harbors, installation must be carried out with the special cable harness (item no.: 25 2652 82 11 00). The cable harness is included in the universal installation kit for recreational vehicles and boats (item no.: 25 2652 82 00 00).

HYDRONIC M



- Available in three models with heating performance between 8 and 12 kW
- Very long service life (6,000 h)

Diesel version	Hydronic M8*	Hydronic M10	Hydronic M12	
Voltage	V	12 / 24	12 / 24	
Heating performance	kW	1.5 / 3.5 / 5.0 / 8.0	1.5 / 3.5 / 8.0 / 9.5	1.2 / 1.5 / 3.5 / 5.0 / 9.5 / 12.0
Power consumption, heater	W	35 / 39 / 46 / 55	35 / 39 / 60 / 86	34 / 35 / 39 / 46 / 86 / 132
Power consumption, water pump	W	29		
Fuel consumption	l/h	0.18 / 0.40 / 0.65 / 0.90	0.18 / 0.40 / 0.90 / 1.20	0.15 / 0.18 / 0.40 / 0.65 / 1.20 / 1.50
Dimensions L x W x H	mm	331 x 138 x 221		
Weight	kg	6.2		

* 100% biodiesel-compatible in accordance with FAME DIN EN 14214

HYDRONIC L



- Particularly powerful
- Suitable for large boats and yachts
- Available in four models with heating performance between 16 and 35 kW

Diesel version	Hydronic L16	Hydronic L24	Hydronic L30	Hydronic L35	
Voltage	V	24			
Heating performance	kW	16	24	30	35
Power consumption, heater	W	60	80	105	120
Power consumption, water pump	W	104 to 210*			
Fuel consumption	l/h	2	2.9	3.65	4.2
Dimensions L x W x H	mm	600 x 220 x 222			
Weight	kg	18			

* Depending on the water pump model



CONTROL UNITS FOR AIRTRONIC AND HYDRONIC

With our modern EasyStart control units, you can easily enjoy the comfort of your boat heater in no time. They check all the right boxes for even the most discerning of skip-pers: they are intuitive to operate and boast an attractive design and high-quality workmanship. You can choose between a built-in control unit or a web-based remote control system that can be linked up to many of the devices currently available.

The Eberspächer EasyStart is the modern way to operate boat heaters.

EASYSTART PRO



The EasyStart Pro control unit sets the new benchmark for our line of control units. In addition to a timer function, the EasyStart Pro comes with numerous practical features:

- Built-in control unit with integrated temperature sensor
- Operation of up to two heaters separately or two identical heaters (Airtronic or Hydronic) in a group
- Simple plain text diagnostics for users
- Endless heater operating time can be set (Airtronic and Hydronic)
- Can be combined with the EasyStart Web*

EASYSTART WEB

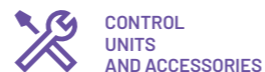


With the EasyStart Web you can start your boat heater anytime and anywhere, regardless of where you are or where your boat is located. The web-based remote control uses a web server that receives the commands you enter from the smartphone app or web browser and sends them in data form to the recipient via all the available cell phone networks. It couldn't be easier to use, and the range is unlimited:

- Always uses the cell phone network with the best signal**
- No need to insert or replace a SIM card
- Option to book a convenient, cost-effective 12-month flat rate
- Roaming function enables use in other countries without additional costs
- Displays the current status (e.g. operating mode, interior temperature, timer)
- Can be combined with the EasyStart Pro*

* With software update

** Network coverage available in the following countries: Austria, Belgium, Czechia, Denmark, Estonia, Finland, France, Germany, Italy, Latvia, Lithuania, Norway, Poland, Romania, Sweden, Switzerland, the Netherlands and the United Kingdom. An up-to-date list of network coverage is available at: <https://myeberspaecher.com/#/customer/serviceDescription>.



CONTROL
UNITS
AND ACCESSORIES

ACCESSORIES FOR AIRTRONIC

FIND THE RIGHT ACCESSORIES FOR YOUR AIR HEATER

AIR VENTS



Particularly colorfast and durable even at high temperatures, the covers of our range of air outlets are impressive, featuring a streamlined and high-quality design that allows for a variety of flow directions. They are available in white and black, allowing seamless integration into any interior.

ADVANTAGES:

- Clear, simple system thanks to the modular concept
- Plug-in connections between the cover and fitting or fitting and air hose for easy assembly
- Fittings available with 50, 60, 75, and 90 mm diameters

AIR FLOW REGULATING ELEMENTS



In order to counteract the non-uniform distribution of warm air in multi-duct systems with several air outlets, we have developed innovative air flow regulating elements that are simply clipped into the hose connection fitting of the air outlet. The regulating elements reduce the flow cross section as needed and thereby decrease the emerging air flow. Available for fitting diameters 60, 75 and 90 mm.

ROOM TEMPERATURE SENSOR



The external temperature sensor reliably measures the current temperature in your boat and automatically adjusts the boat heater to the setpoint temperature. Required when operating an Airtronic in fresh air mode without EasyStart Pro control unit (temperature sensor already integrated).

ACCESSORIES FOR INSTALLATION



Numerous practical accessories are available for fast, trouble-free heater installation.

ADVANTAGES:

- Y- and T- pieces
- Butterfly valves
- Hoses
- Air outlets
- Air-intake and heating-air silencers



THERMOPRODUKTER AB
DRAGONVÄGEN 6
392 39 KALMAR

PHONE: +46 480 425 880
info@thermoprodukter.se
www.thermoprodukter.se

EBERSPÄCHER AB
KARDANVÄGEN 34
461 38 TROLLHÄTTAN

PHONE: +46 8 683 11 00
info-se@eberspaecher.com
www.eberspaecher.se