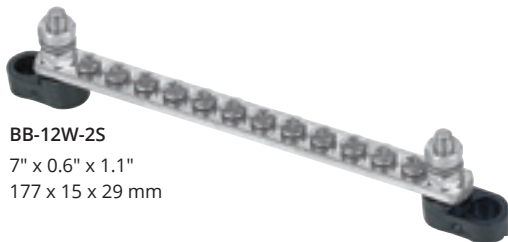


Bus Bars

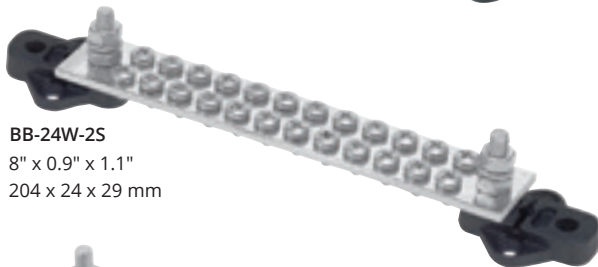
- Now with easy-fit covers to ABYC standards, with polarity ID
- 5/32" (4 mm) stainless steel screws with shakeproof washers
- 2 x 1/4" (6 mm) input studs
- Tin-plated, brass-insulated mounting bases with recessed mounting holes to avoid accidental shorts on aluminum surfaces
- Supplied standard with all BEP AC & DC control panels
- Display pack versions supplied with cover



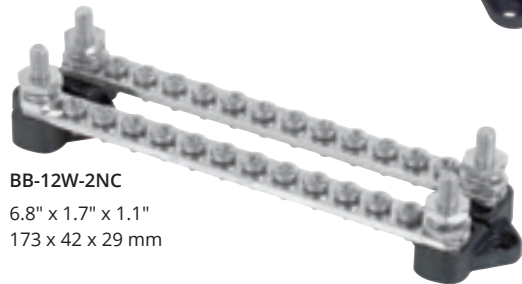
BB-6W-2S
4.6" x 0.6" x 1.1"
117 x 15 x 29 mm



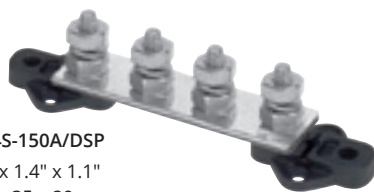
BB-12W-2S
7" x 0.6" x 1.1"
177 x 15 x 29 mm



BB-24W-2S
8" x 0.9" x 1.1"
204 x 24 x 29 mm



BB-12W-2NC
6.8" x 1.7" x 1.1"
173 x 42 x 29 mm



BB-4S-150A/DSP
5.4" x 1.4" x 1.1"
138 x 35 x 29 mm

Part #	OEM #	Bus Type	Output screws	Input studs	Rating
BB-6W-2S/DSP	BB-6W-2S	Single	6	2	100A
BB-12W-2S/DSP	BB-12W-2S	Single	12	2	100A
BB-24W-2S/DSP	BB-24W-2S	Single	24	2	150A
BB-12W-2NC/DSP	BB-12W-2NC	Double	2 x 12	2 x 12-way	100A
BB-4S-150A/DSP	BB-4S-150A	4-way	1 x 4	4 x 6 mm (1/4 stud)	150A

Bus Bar Covers

- Flame-resistant flexible plastic
- Color-coded for polarity
- Unique push-on fit
- Supplied standard with bus bars when ordered in display packs (for bulk packaging ordered separately)



6 W
BBC-6WR Positive
BBC-6WBK Negative



12 W
BBC-12WR Positive
BBC-12WBK Negative



24 W
BBC-24WR Positive
BBC-24WBK Negative

Terminal Blocks

Ideal for isolated connections up to 30A. Suitable for connecting tails from AC and DC panels.

Base material: Phenolic; Current rating 30A; Max. voltage rating: 300V AC/DC; Screw size: 0.25" (6.3 mm)

- TB-118-6P 6 connections
- TB-118-10P 10 connections

